

# Drivers Plug & Play

## GTSmartstream 3.xx

### LSolution 5.xx-3

<b>Install GTSmartstream 3.xx Plug &amp; Play printer driver :</b> .....	<b>2</b>
Install a rotary machine on USB port : .....	3
Install an additional engraving rotary machine on USB port : .....	8
Case n°1 : the engraving machine is different from machines already installed and firmware of the machine is « plug & Play » .....	8
Case n°2 : the engraving machine is different from machines already installed and firmware of the machine is not « plug & Play » .....	12
Case n°3 : the engraving machine is the same one that a machine already installed .....	15
Install a rotary machine on an other port : COM .....	17
<b>Drive a rotary machine with GravoStyle 5</b> .....	<b>18</b>
<b>Install Lsolution 5.xx driver Plug &amp; Play :</b> .....	<b>21</b>
Install a laser machine on USB port .....	22
Install an additional engraving laser machine on USB port : .....	26
Case n°1 : the laser machine is different from machines already installed and firmware of the machine is « plug & Play » .....	27
Case n°2 : the engraving laser machine is different from machines already installed and firmware of the machine is not « plug & Play » .....	31
Case n°3 : the engraving machine is the same one that a machine already installed .....	33
Install a laser machine on an other port : LPT (parallel) .....	34
<b>Drive a bidirectional laser machine with GravoStyle 5 (LS100 / LS100 Ex) .....</b>	<b>37</b>
<b>Drive a no-bidirectional laser machine with GravoStyle 5 (LS800 / LS900) .....</b>	<b>46</b>
<b>Drive a laser machine with your usual graphical editor (Corel Draw, Autocad, Adobe Illustrator...) .....</b>	<b>48</b>
<b>Frequently Asked Questions :</b> .....	<b>49</b>
What is a bidirectional laser machine ? .....	49
How to know if the firmware of the machine is “Plug & Play”? .....	49
How to know the name of the machine and the version of the firmware ? .....	49
Is there an order to install several machines plugged on the same PC ? .....	51
Which driver to use with a machine ? .....	51

## Install GTSmartstream 3.xx Plug & Play printer driver :

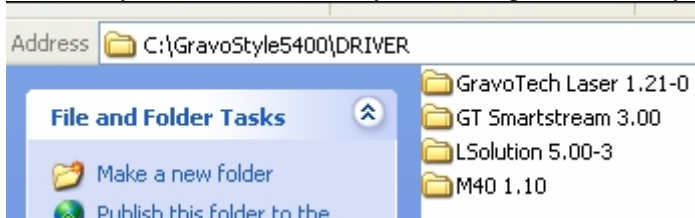
Power off the machine. Unplug from your PC.

Power up PC. Let Windows operating system start.

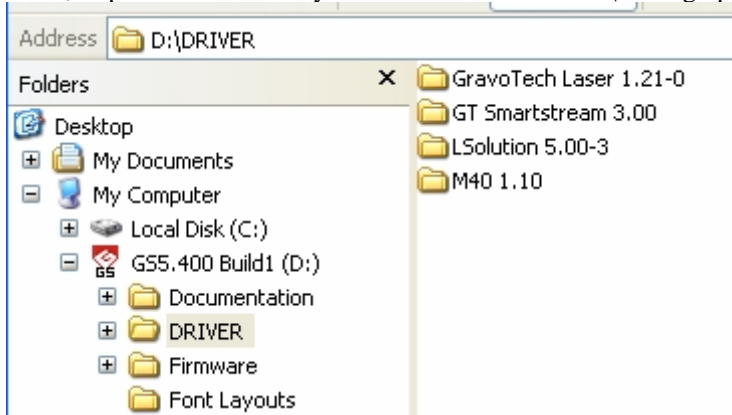
**Run a session as Administrator.** A standard user has no right to make a setup in Windows

Open the folder with GTSmartstream 3.00 driver

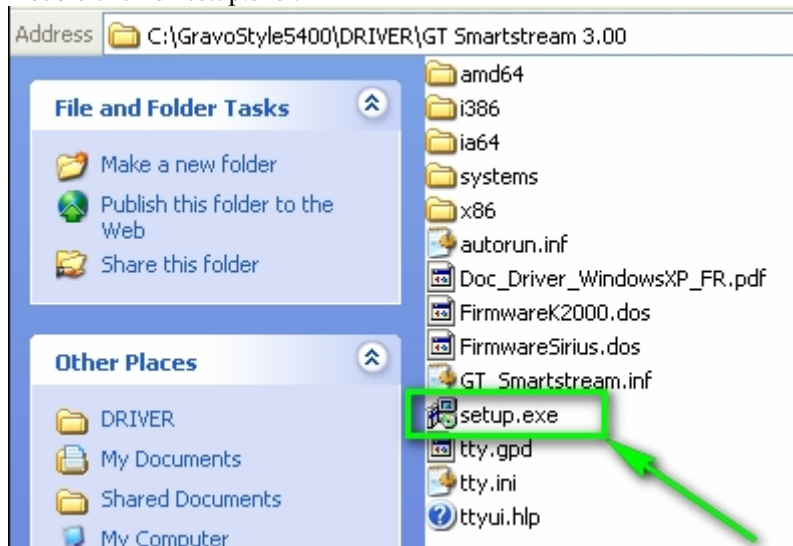
- If GravoStyle5 Version 4 is already installed, open C:\GravoStyle5400\DRIVER\ folder



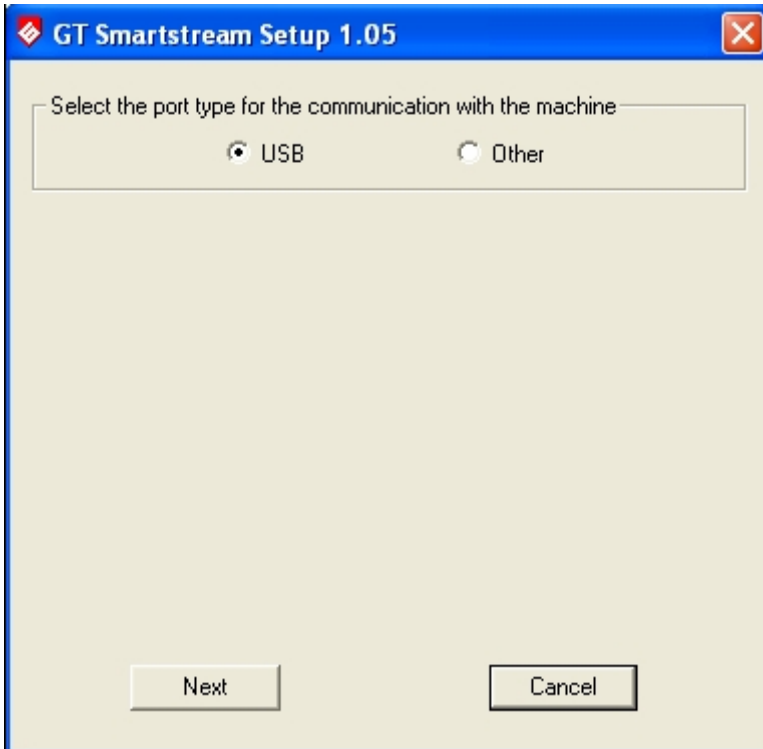
- If not, Explore the « GravoStyle5 Version 4 » DVD : D:\Gravograph\added\DRIVER folder



Double click on setup.exe :



Select the port used for the connection between the PC and the machine :



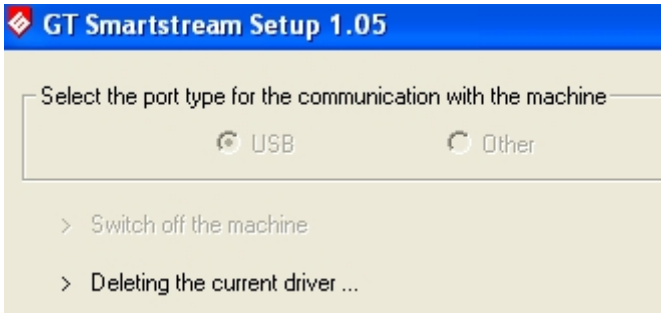
**Install a rotary machine on USB port :**

Select USB

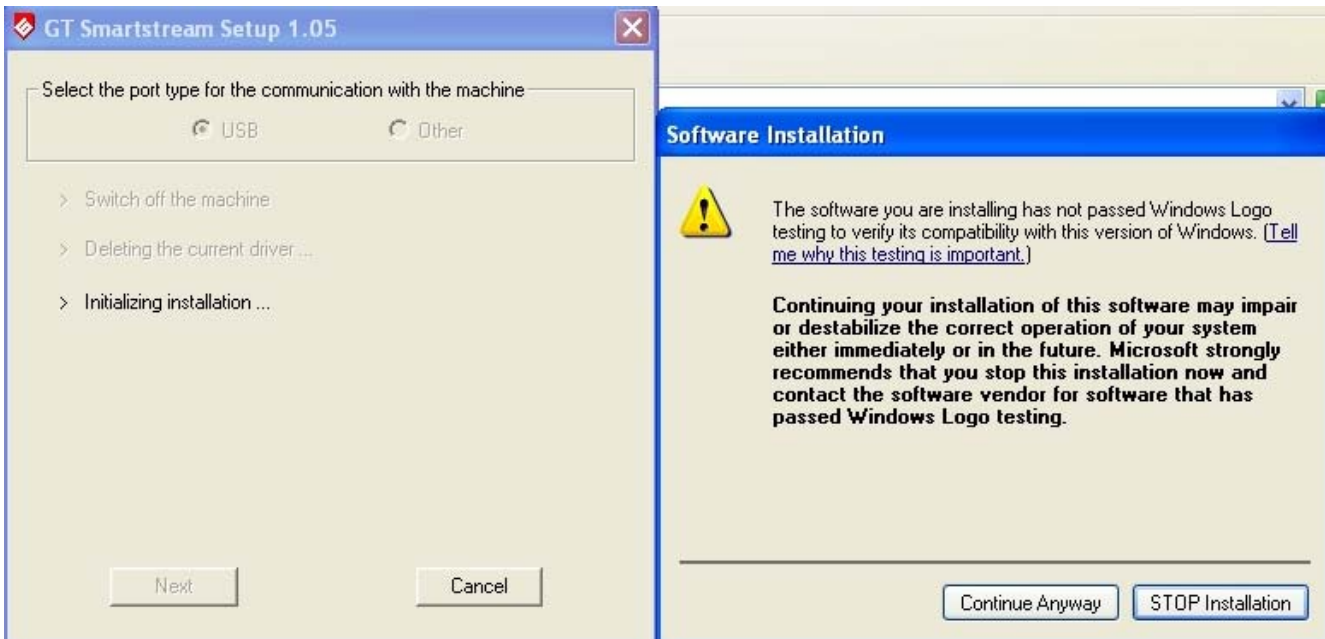
Click on « Next »

If the machine was switch on, a message ask to switch off it.

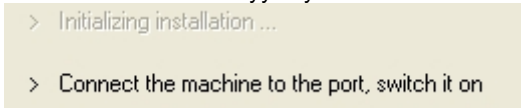
If GTSmartstream drivers were installed, then they were deleted:



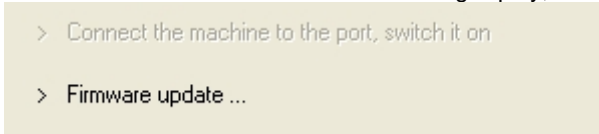
A message notified that driver is not windows certified.



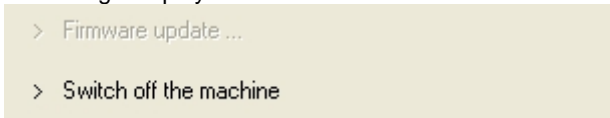
Click on « Continue Anyway »



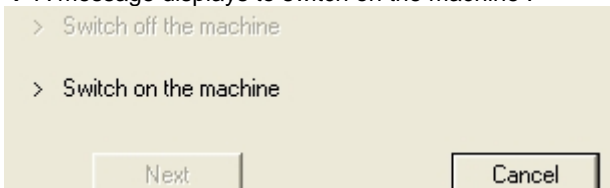
Connect the machine to the port and switch it on :  
 → if the firmware of the machine is not Plug & play, then there is a firmware update :



A message displays to switch off the machine :

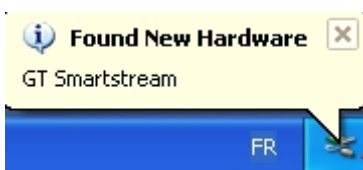


Switch off the machine :  
 → A message displays to switch on the machine :



Switch on the machine :

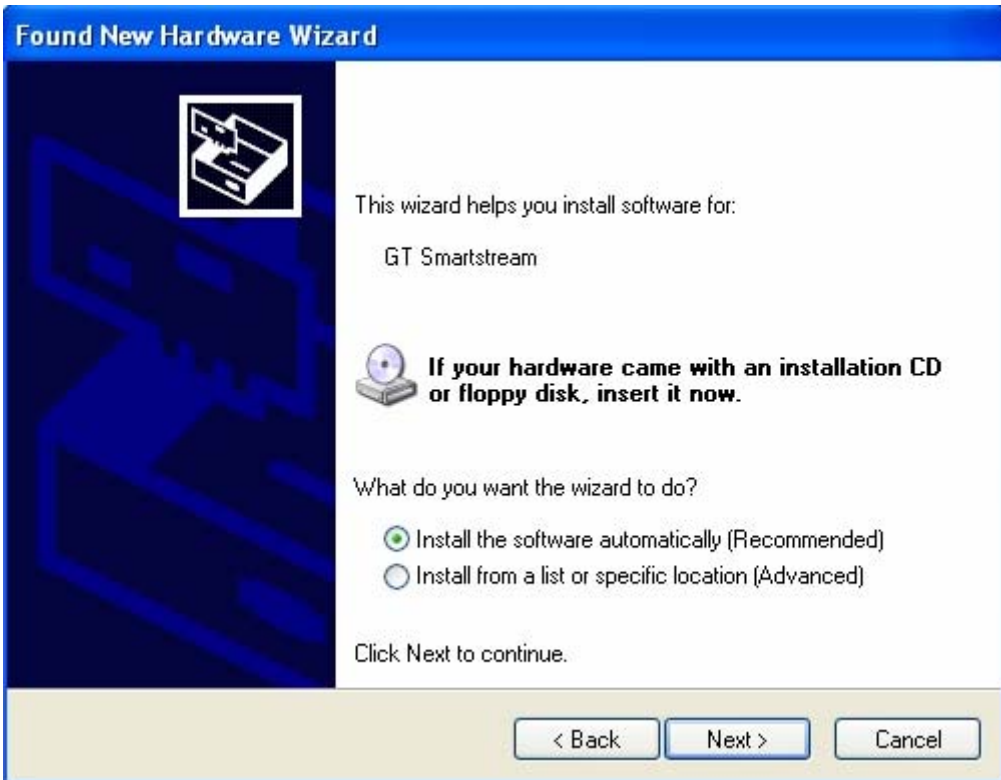
→ a tooltip displays « Found New Hardware » :



Found New Hardware Wizard is automatically lunched :  
 Select "No, not this time"

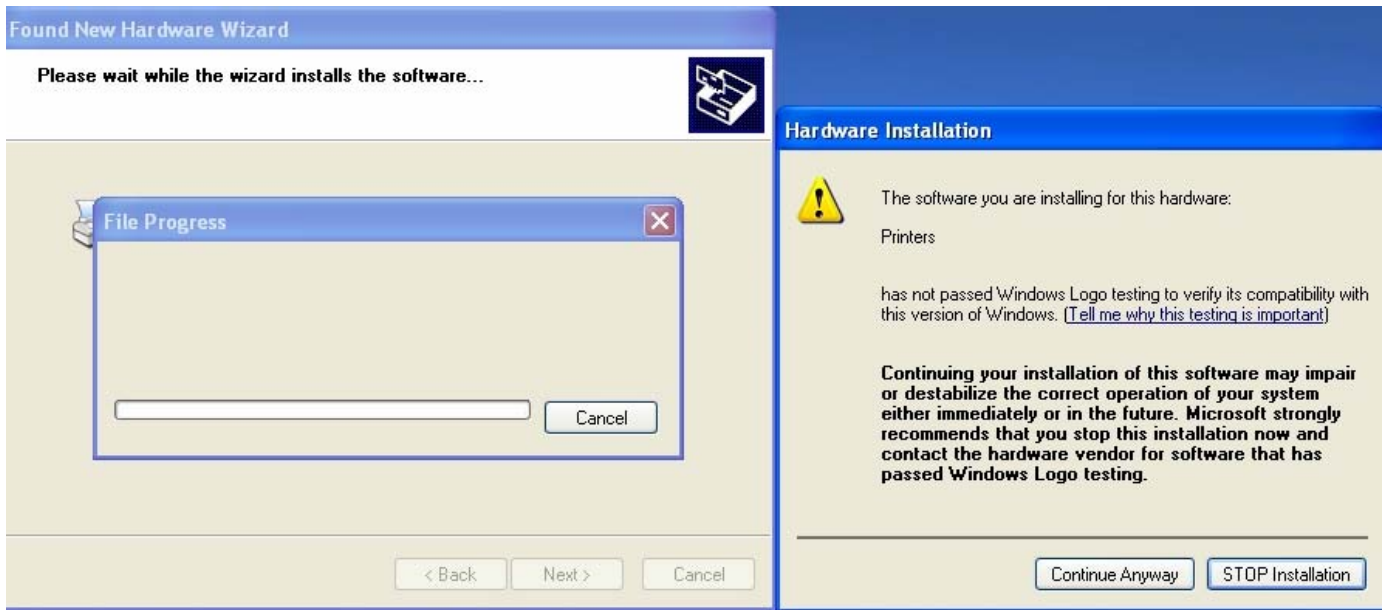


Click on "Next"

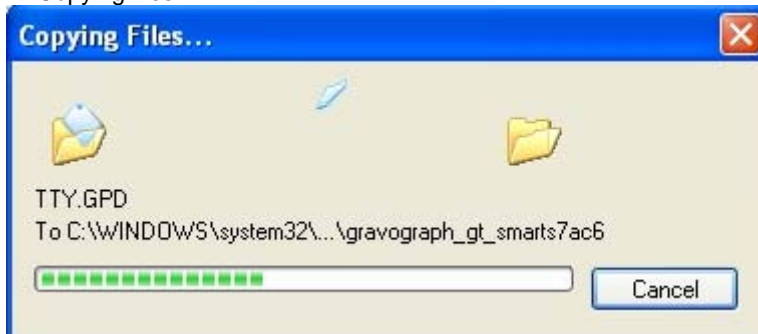


Select « install the software automatically (Recommended) »  
Click on "Next"

A message notified that driver is not windows certified.



Click on "Continue Anyway"  
→ Copying files :

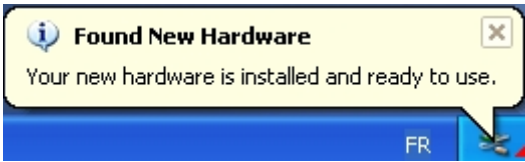


The wizard has finished installing the software for GT Smartstream



Click on « Finish »

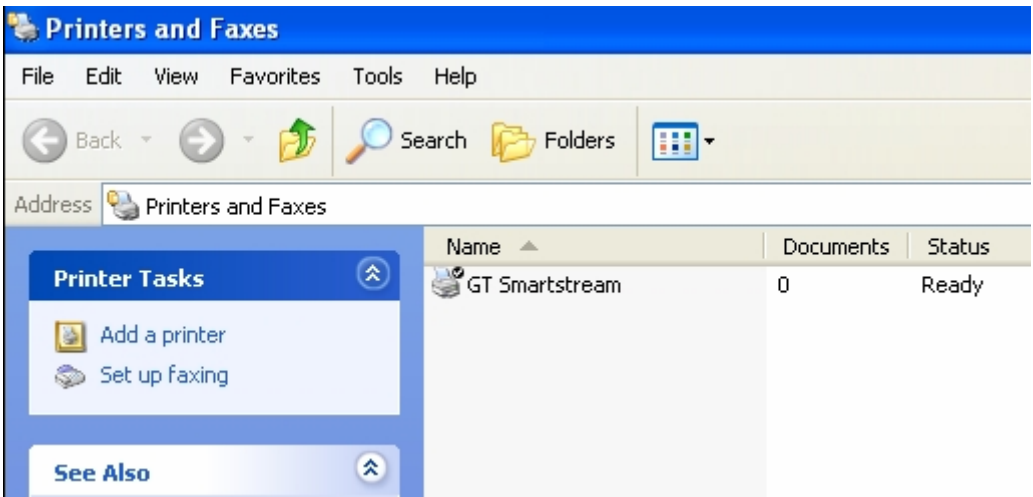
→ a message notified « Your new hardware is installed and ready to use » :



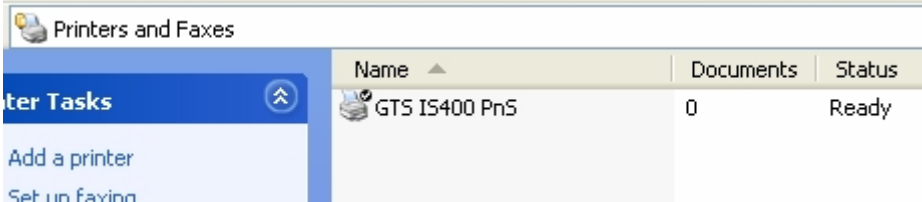
Click on « Printers and Faxes » in « Start » menu (or in Control panel)



Check that your machine is displayed as new GT Smartstream printer



Give this printer the name of your engraving machine :



## Install an additional engraving rotary machine on USB port :

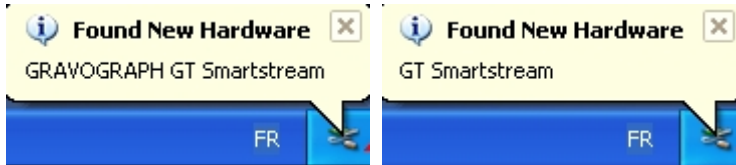
Case n°1 : the engraving machine is different from machines already installed and firmware of the machine is « plug & Play »

Sirius card : Plug & Play : at least number 1.37

UC K2000 card : Plug & Play : at least number 2.61

Switch on the machine :

→ a tooltip displays « Found New Hardware » :



Found New Hardware Wizard is automatically launched :  
Select "No, not this time"



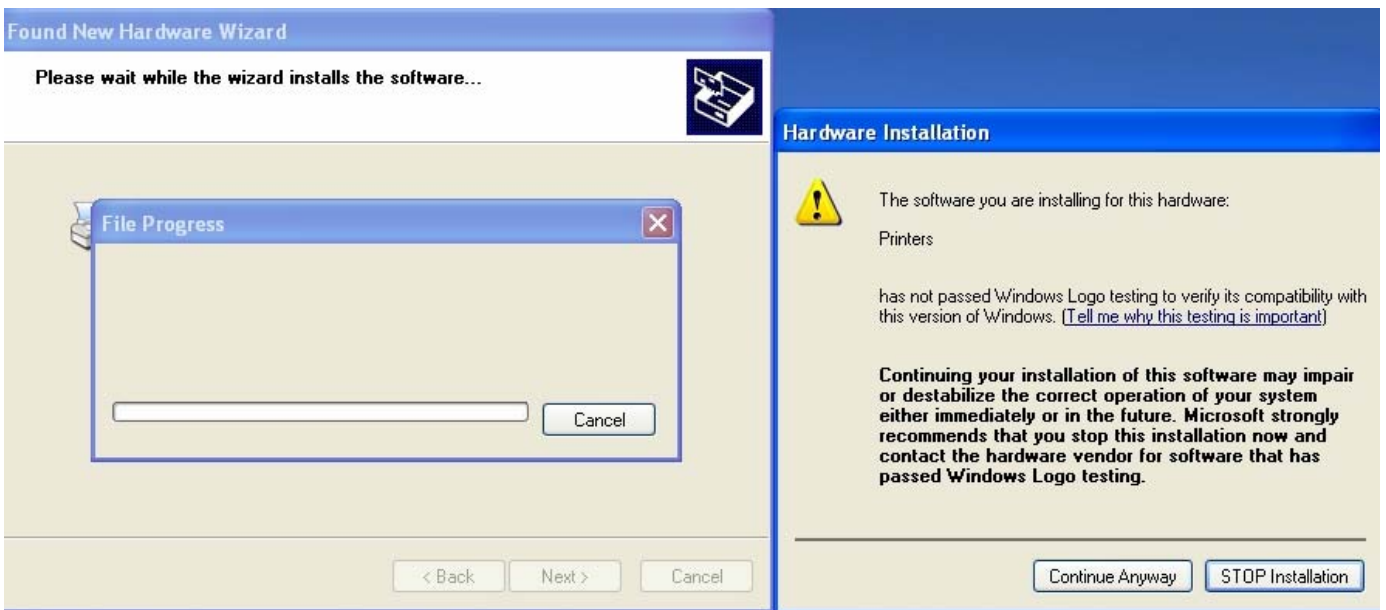
Click on "Next"



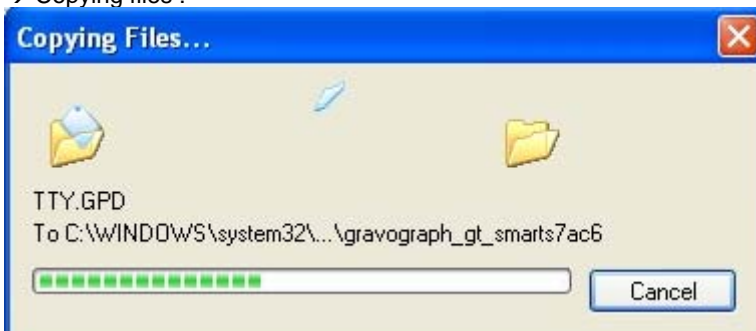


Select « install the software automatically (Recommended) »  
Click on “Next”

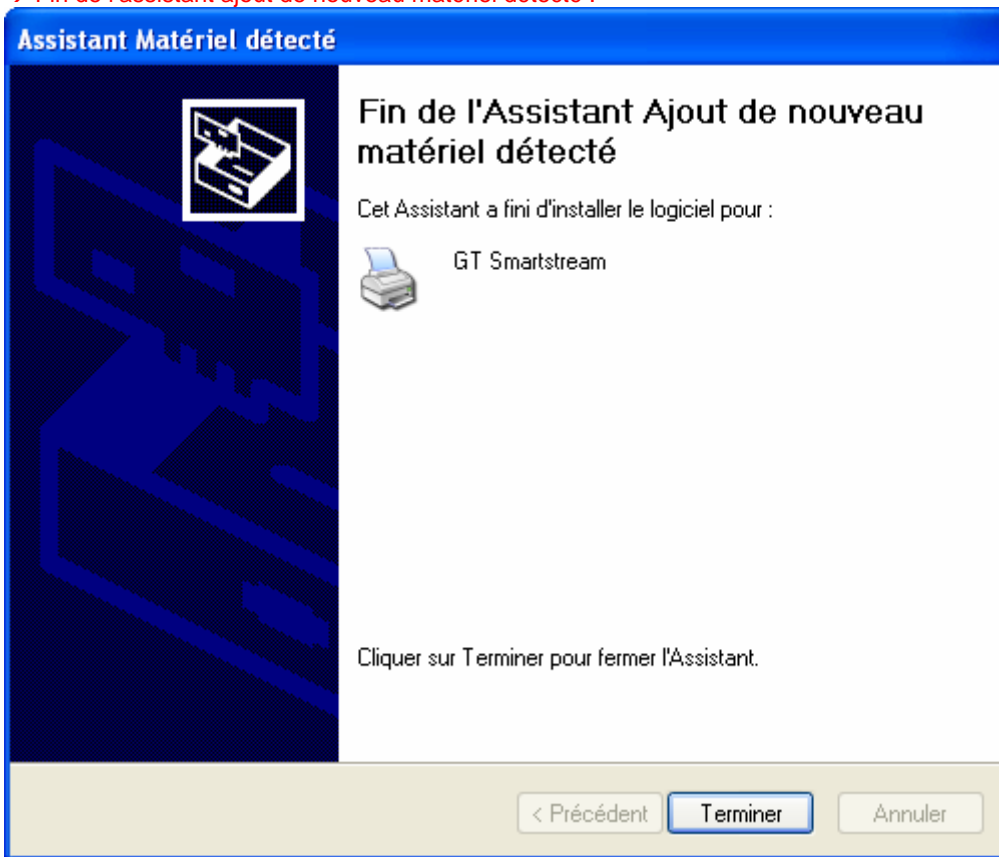
A message notified that driver is not windows certified.



Click on « Continue Anyway »  
→ Copying files :

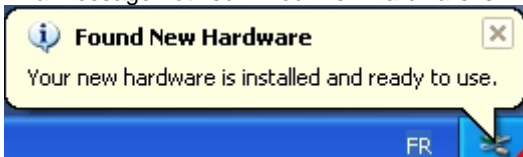


→ Fin de l'assistant ajout de nouveau matériel détecté :

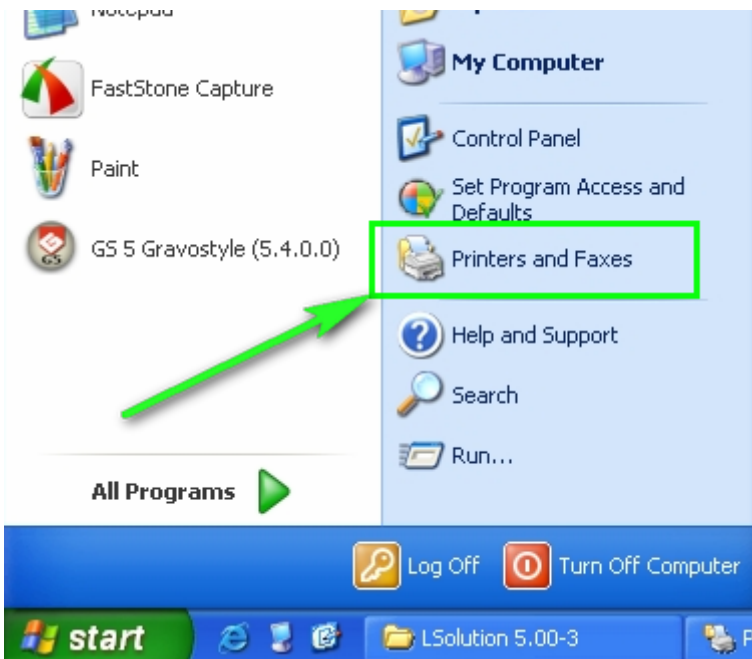


Click on « Finish »

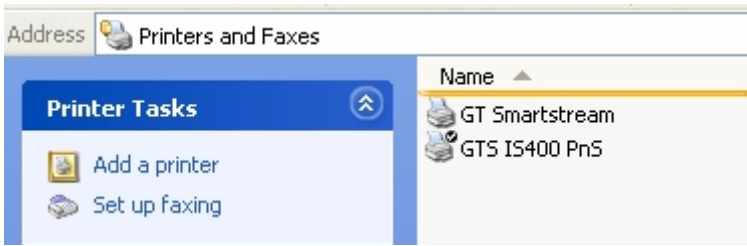
→ a message notified « Your new hardware is installed and ready to use » :



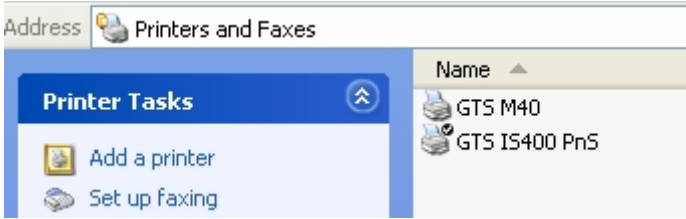
Click on « Printers and Faxes » in « Start » menu (or in Control panel)



Check that your machine is displayed as new GT Smartstream printer



Give this printer the name of your engraving machine :

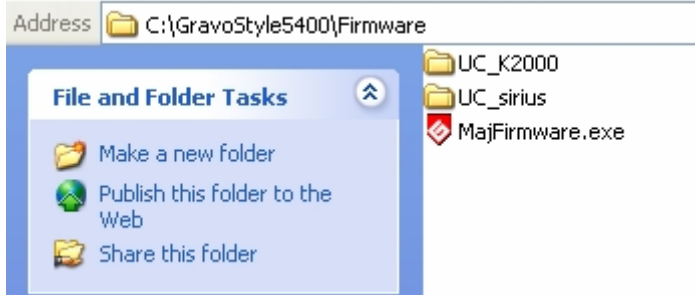


**Case n°2 : the engraving machine is different from machines already installed and firmware of the machine is not « plug & Play »**

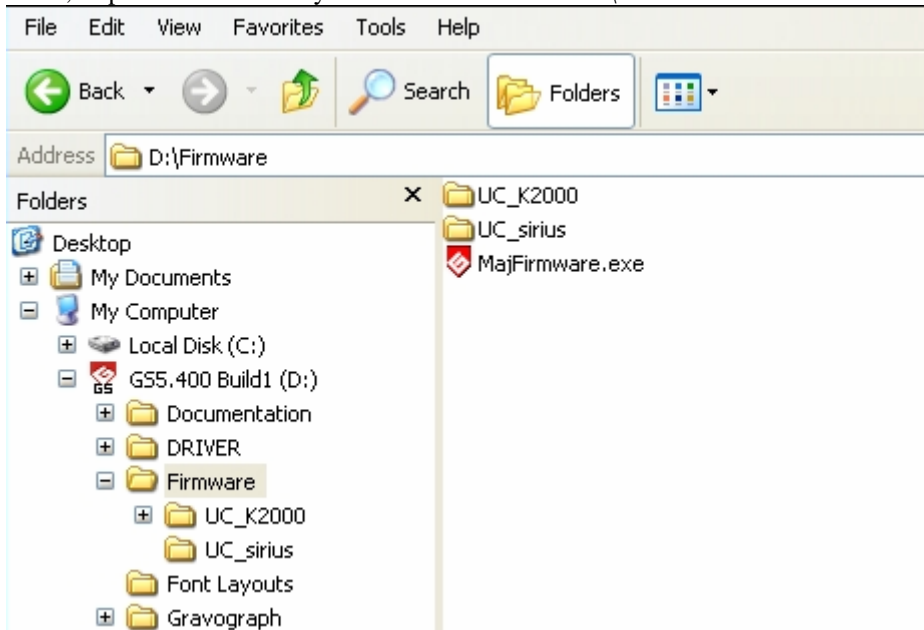
(For information, if nothing happens when we power up the engraving machine, then the version of the firmware is not “plug & play”, so, it is necessary to update the firmware with a “Plug & Play” firmware.

Open the folder with MajFirmware tool :

- If GravoStyle5 Version 4 is already installed, open C:\Gravostyle5400\Firmware\ folder

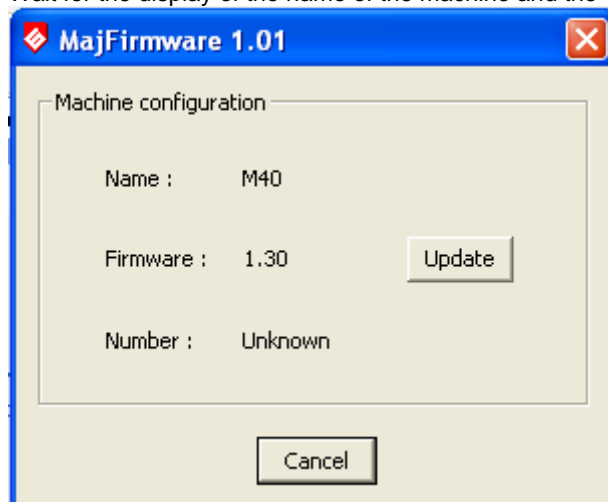


- If not, Explore the « Gravostyle5 Version 4 » DVD : D:\Firmware folder



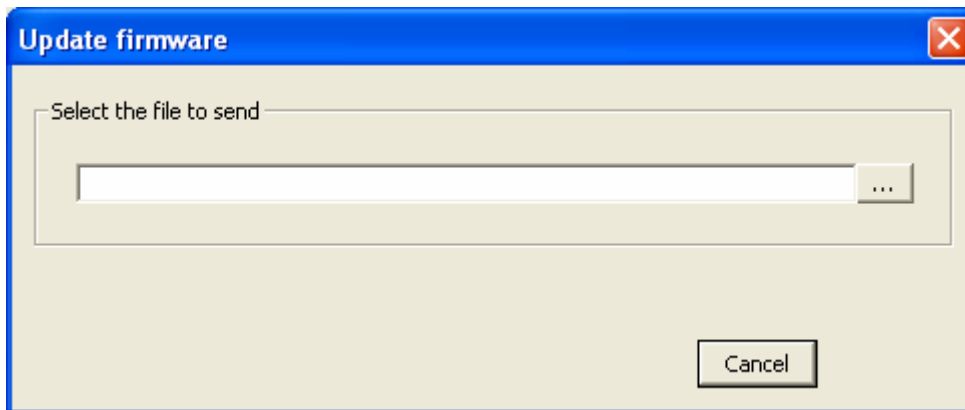
Double-click on MajFirmware.exe :


Wait for the display of the name of the machine and the version of the firmware :

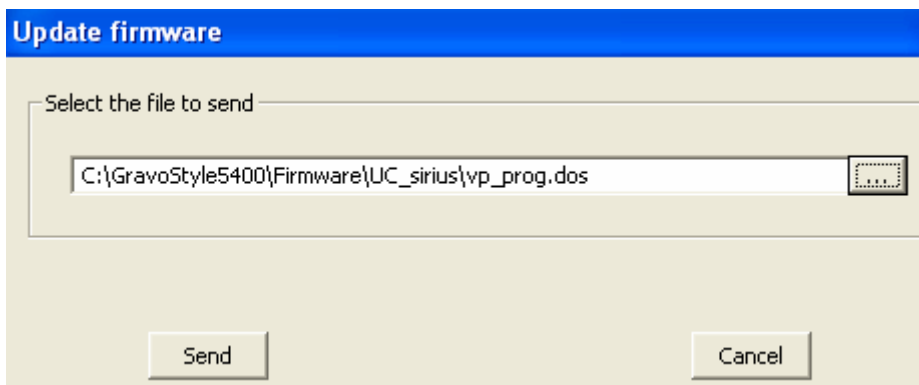
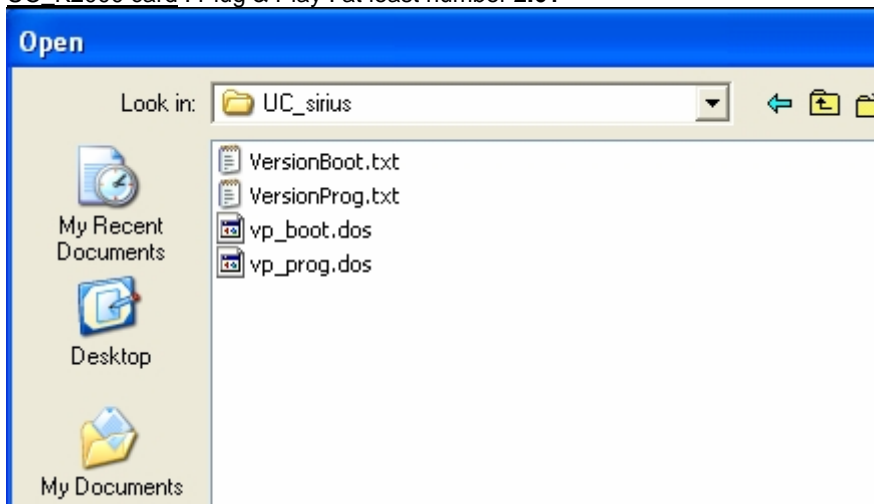


Number = « Unknown » is displayed if the firmware is not Plug & play.

Click on « Update » in front of Firmware :

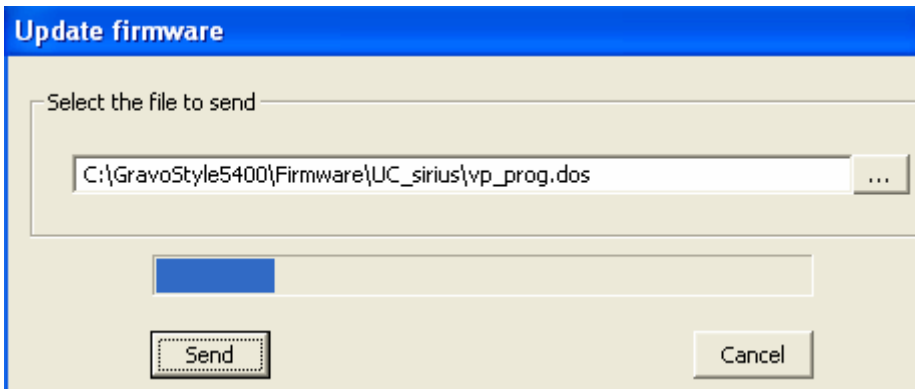


Click on the button  and select a « plug & play » firmware (vp\_prog.dos) in UC\_Sirius or UC\_K2000 folder.  
Sirius card : Plug & Play : at least number **1.37**  
UC\_K2000 card : Plug & Play : at least number **2.61**



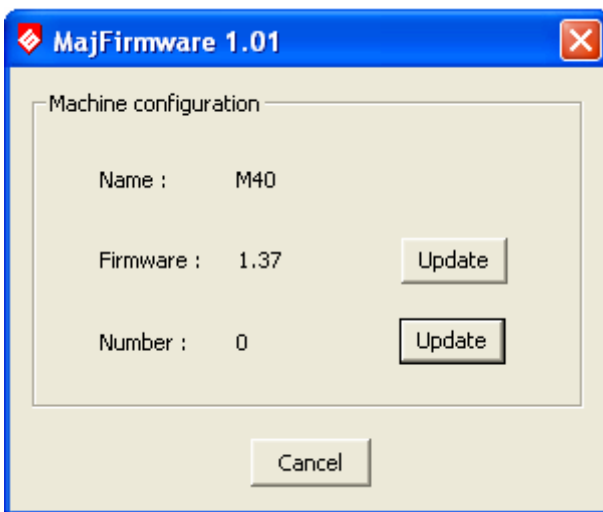
Click on Send :

A scroll bar displays :



At the end, version of firmware is displayed (1.37 in this example) :

Number = « 0 » → Firmware is « plug & play »  
Click on « Cancel » to close MajFirmware tool.



→ Follow the steps of case number 1

### Case n°3 : the engraving machine is the same one that a machine already installed

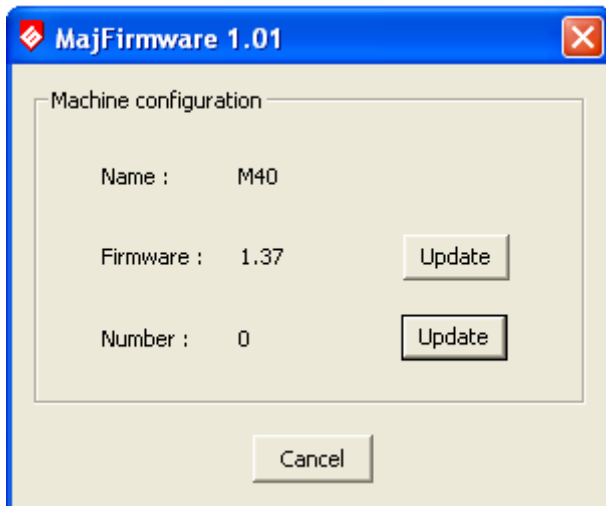
(If firmware of the machine is not "Plug & play", follow steps of case n°2

Open the folder with MajFirmware tool :

- If GravoStyle5 Version 4 is already installed, open C:\Gravostyle5400\Firmware\ folder
- If not, Explore the « GravoStyle5 Version 4 » DVD : D:\Firmware folder

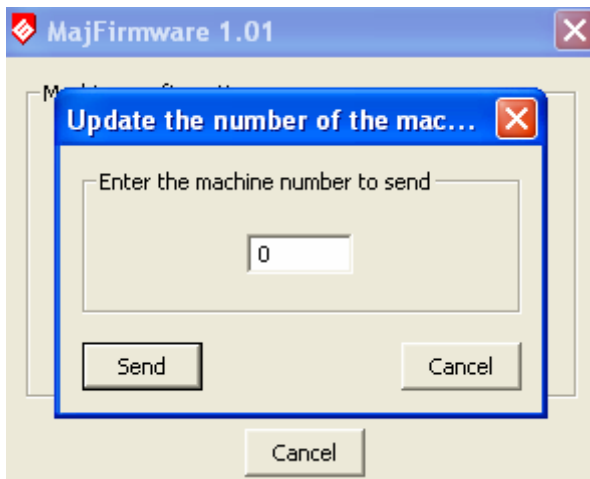
Double-click on MajFirmware.exe :

Wait for the display of the name of the machine and the version of the firmware :



2 identical machines must be differentiated with « Number » parameter

Click on "Update" button in front of « Number »



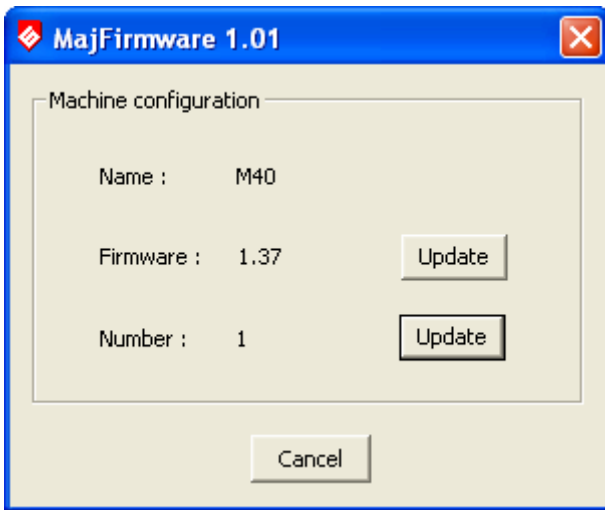
Enter a number different from the machines already installed.

By default, the machine has number 0, So at the installation of a second machine, enter number 1, then number 2...

Click on « Send » :

→ machine bips

→ « Number » = 1 is displayed in MajFirmware

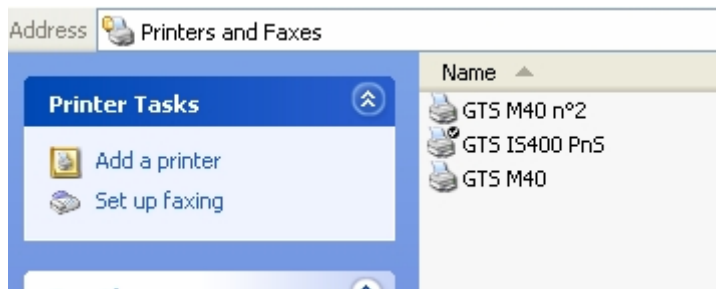


Click on « Cancel » to close MajFirmware tool.

Power off the engraving machine, then power up again.

→ Follow the steps of case number 1

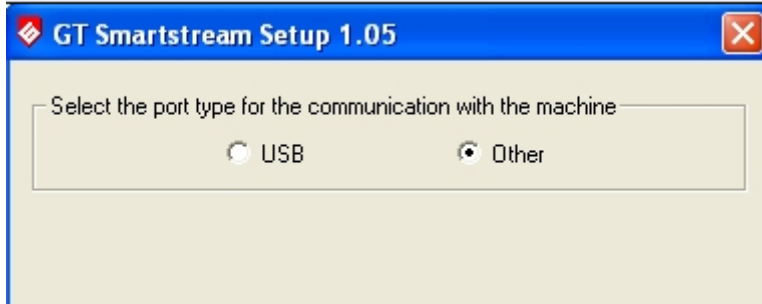
Ensure to differentiate the name of printer of the 2 identical machines (M40 and M40 n°2 for example)





**Install a rotary machine on an other port : COM**

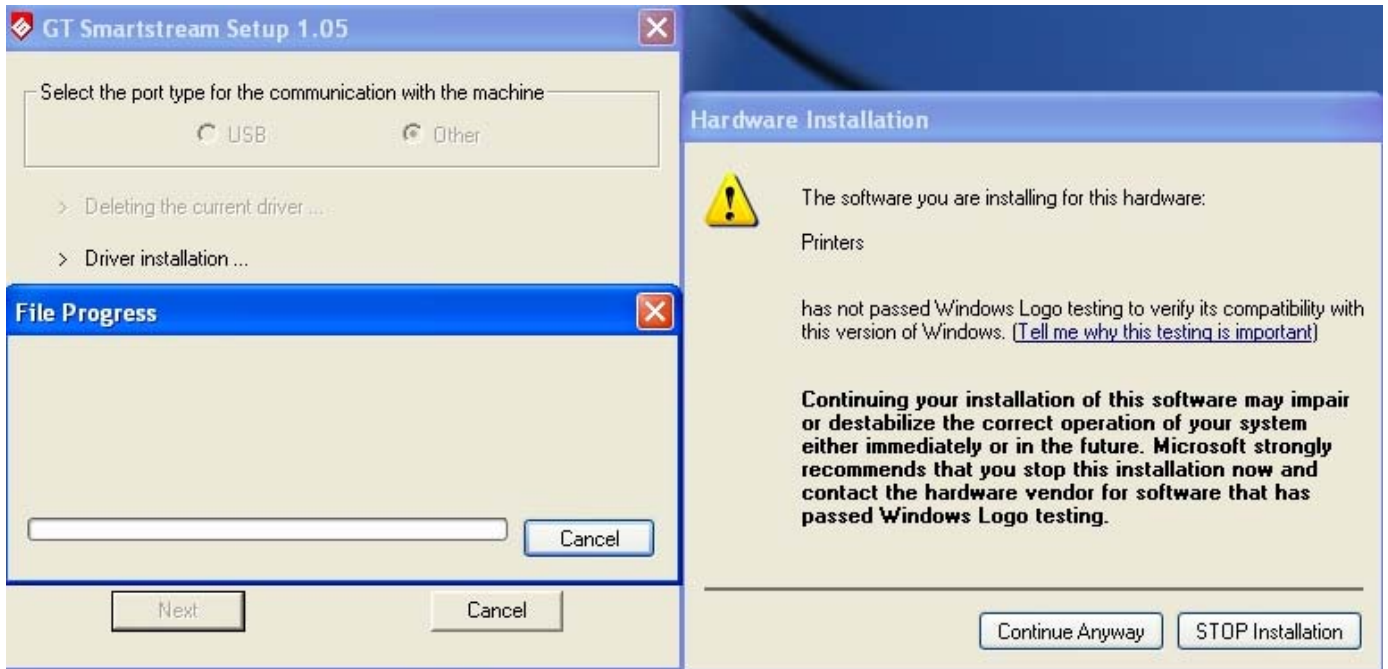
Select « Other »



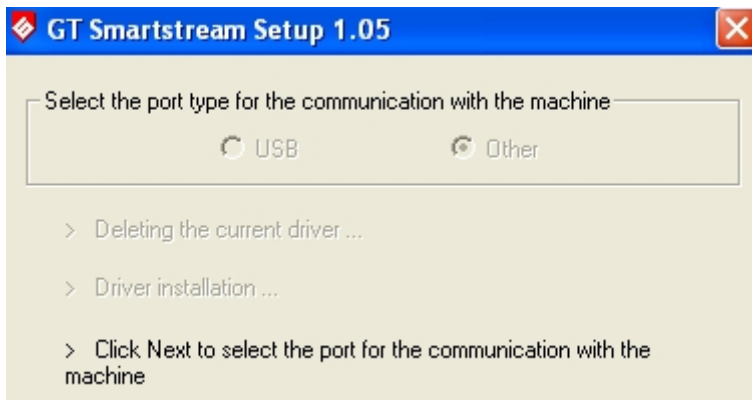
Click on « Next »

If GTSmartstream drivers were installed, then they were deleted:

A message notified that driver is not windows certified.

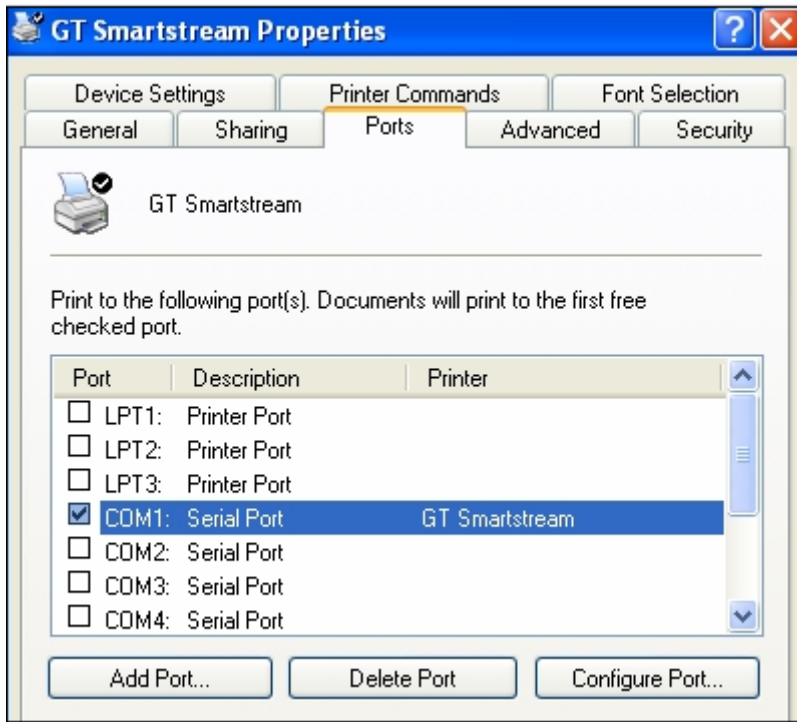


Click on « Continue Anyway »

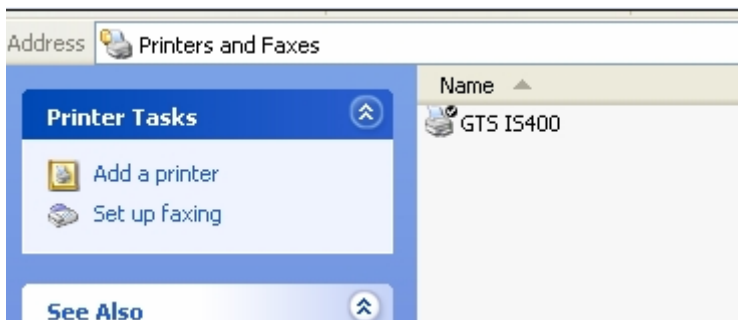
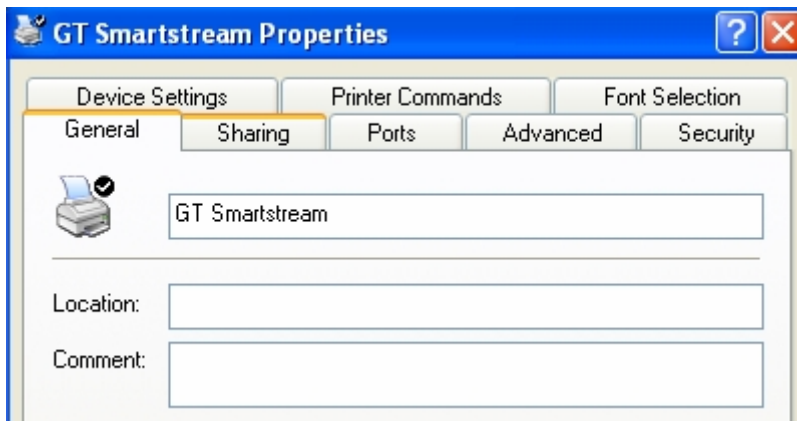


Follow the step of the installation :

With selection of the port :

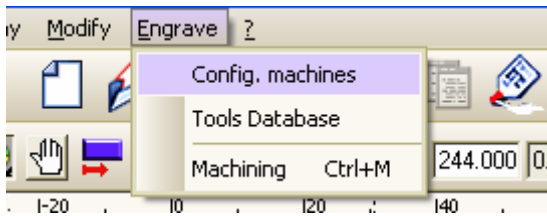


Give this printer the name of the engraving machine :

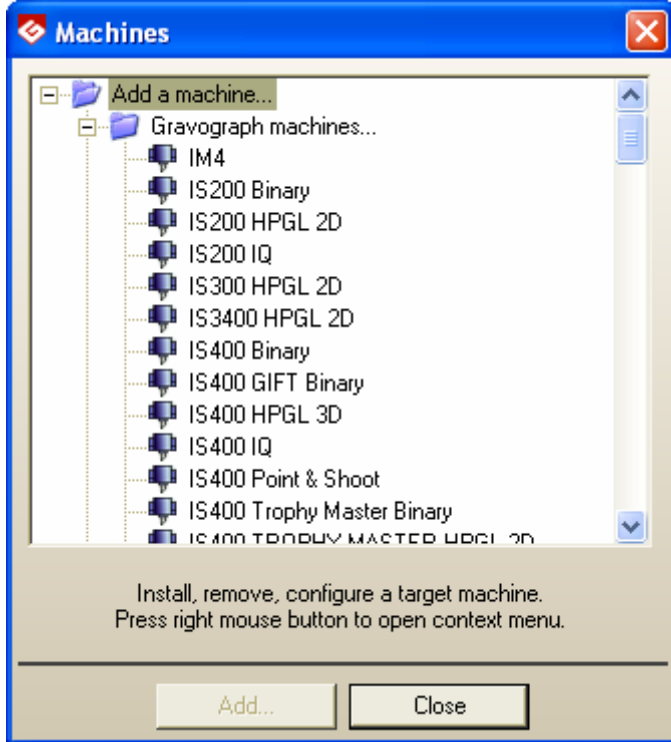


## **Drive a rotary machine with GravoStyle 5**

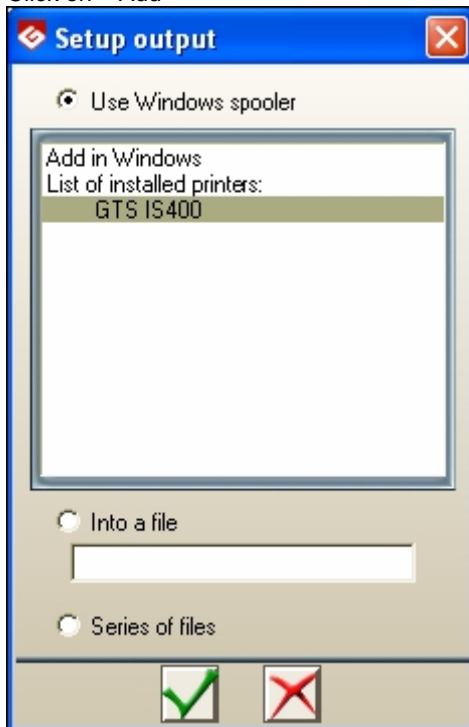
Start GravoStyle5 Version 4  
Click on « Engrave » tab / « Config. Machines »




Select your engraving machine



Click on « Add »



Select printer with the name of your engraving machine  
Click on « valid » button

 Machine properties
✕

Name:

Dll:

Total dimensions

Min X: <input style="width: 90%;" type="text" value="0.000 mm"/>	Max X: <input style="width: 90%;" type="text" value="305.000 mm"/>
Min Y: <input style="width: 90%;" type="text" value="0.000 mm"/>	Max Y: <input style="width: 90%;" type="text" value="210.000 mm"/>
Min Z: <input style="width: 90%;" type="text" value="-1000.000 mm"/>	Max Z: <input style="width: 90%;" type="text" value="1000.000 mm"/>

Standard point

X: <input style="width: 90%;" type="text" value="0.000 mm"/>	Top left	<input type="radio"/>	<input type="radio"/>	Top right
Y: <input style="width: 90%;" type="text" value="210.000 mm"/>			<input type="radio"/>	Center
Z: <input style="width: 90%;" type="text" value="0.000 mm"/>	Bottom left	<input type="radio"/>	<input type="radio"/>	Bottom right

Axes

XY 2 axes	<input checked="" type="radio"/>	Fuzzy logic axes	<input type="radio"/>	Panel axis:	<input checked="" type="radio"/>	None	Accuracy:
XYZ 3 axes	<input type="radio"/>	3 axes Cylinder AYZ	<input type="radio"/>		<input type="radio"/>	X	<input style="width: 60px;" type="text" value="0.010 mm"/>
XYZQ 4 axes	<input type="radio"/>	AYZQ 4 axes	<input type="radio"/>		<input type="radio"/>	Y	
XYZPQ 5 axes	<input type="radio"/>	AYZPQ 5 axes	<input type="radio"/>		<input type="radio"/>	X & Y	

## Install Lsolution 5.xx driver Plug & Play :

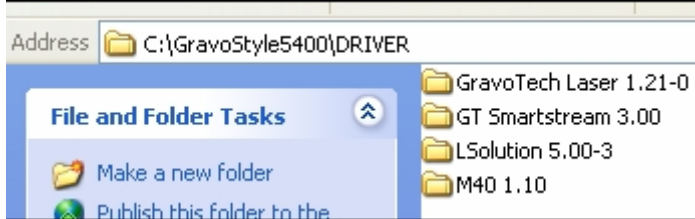
Power off the machine. Unplug from your PC.

Power up PC. Let Windows operating system start.

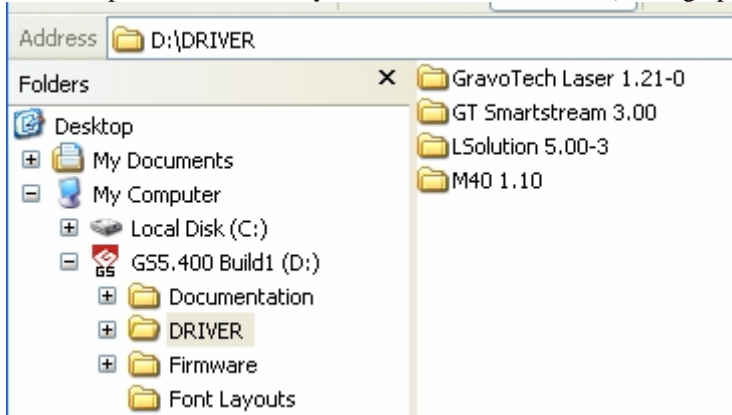
**Run a session as Administrator.** A standard user has no right to make a setup in Windows

Open the folder with Lsolution 5.00-3 driver

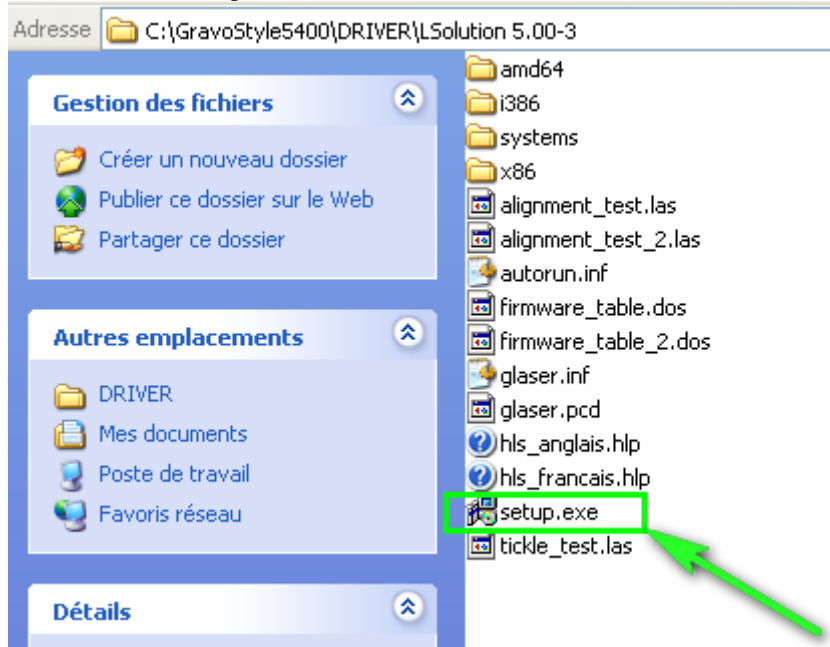
- If GravoStyle5 Version 4 is already installed, open C:\Gravostyle5400\DRIVER\ folder



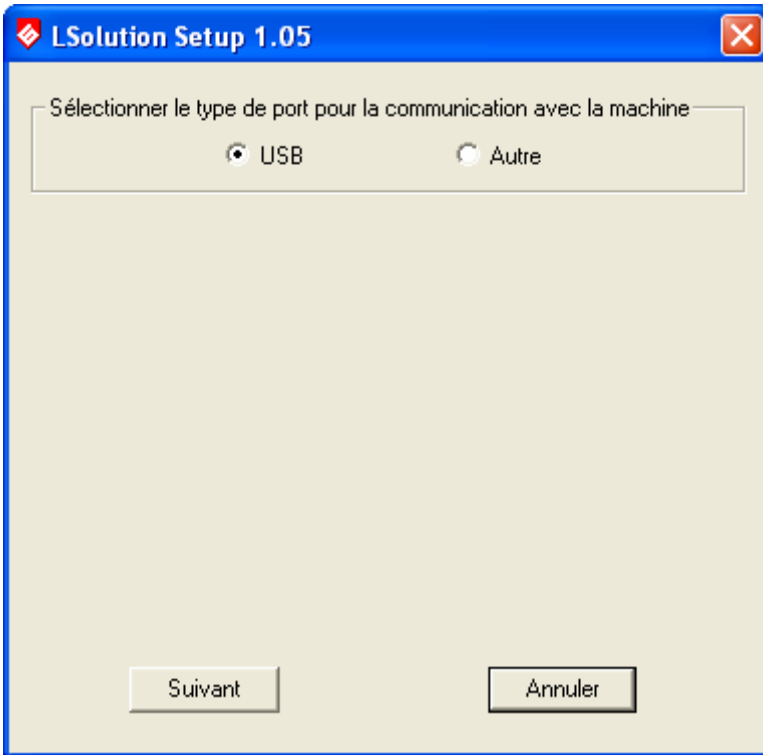
- If not, Explore the « Gravostyle5 Version 4 » DVD : D:\Gravograph\added\DRIVER folder



Double-click on setup.exe :



Select the port used for the connection between the PC and the machine :

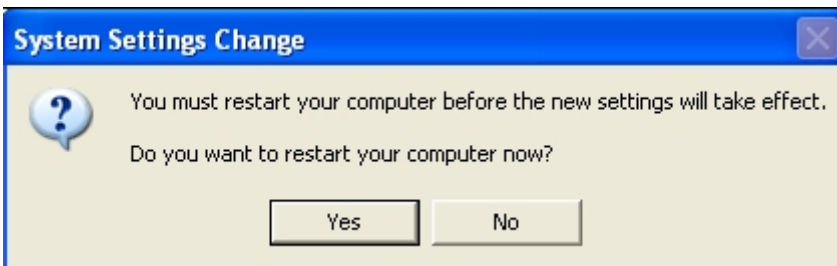
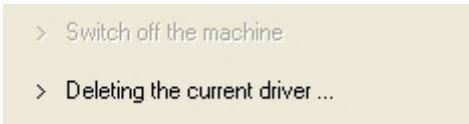


**Install a laser machine on USB port**

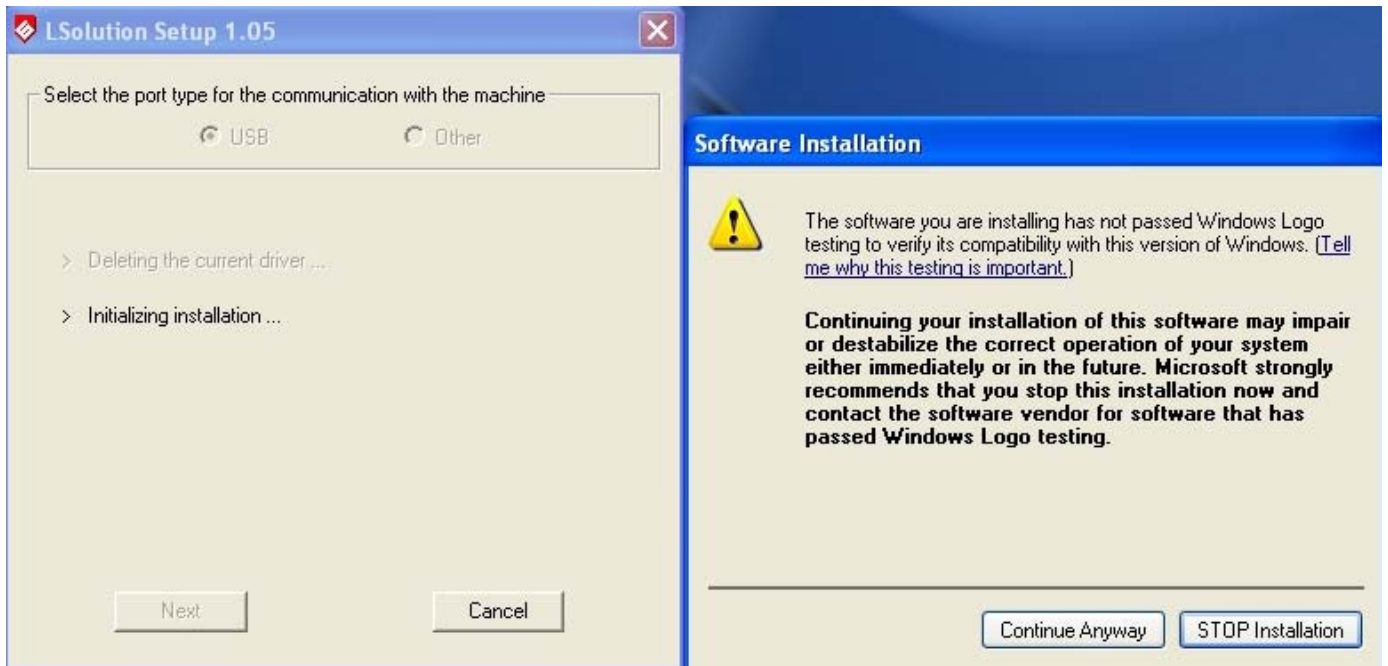
Select USB

Click on « Next »

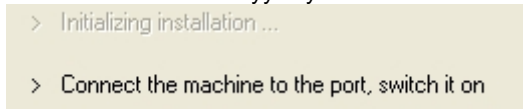
If the machine was switch on, a message ask to switch off it.  
If LSolution drivers were installed, then they were deleted:



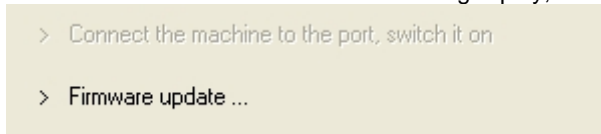
A message notified that driver is not windows certified.



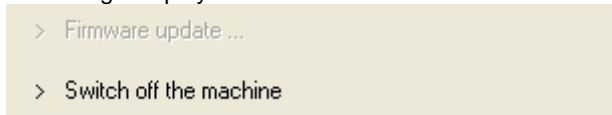
Click on « Continue Anyway »



Connect the machine to the port and switch it on :  
 → if the firmware of the machine is not Plug & play, then there is a firmware update :

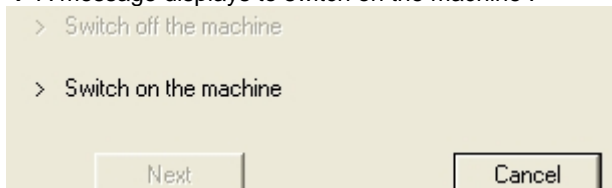


A message displays to switch off the machine :



Switch off the machine :

→ A message displays to switch on the machine :



Switch on the machine :

→ a tooltip displays « Found New Hardware » :



Found New Hardware Wizard is automatically launched :  
 Select "No, not this time"



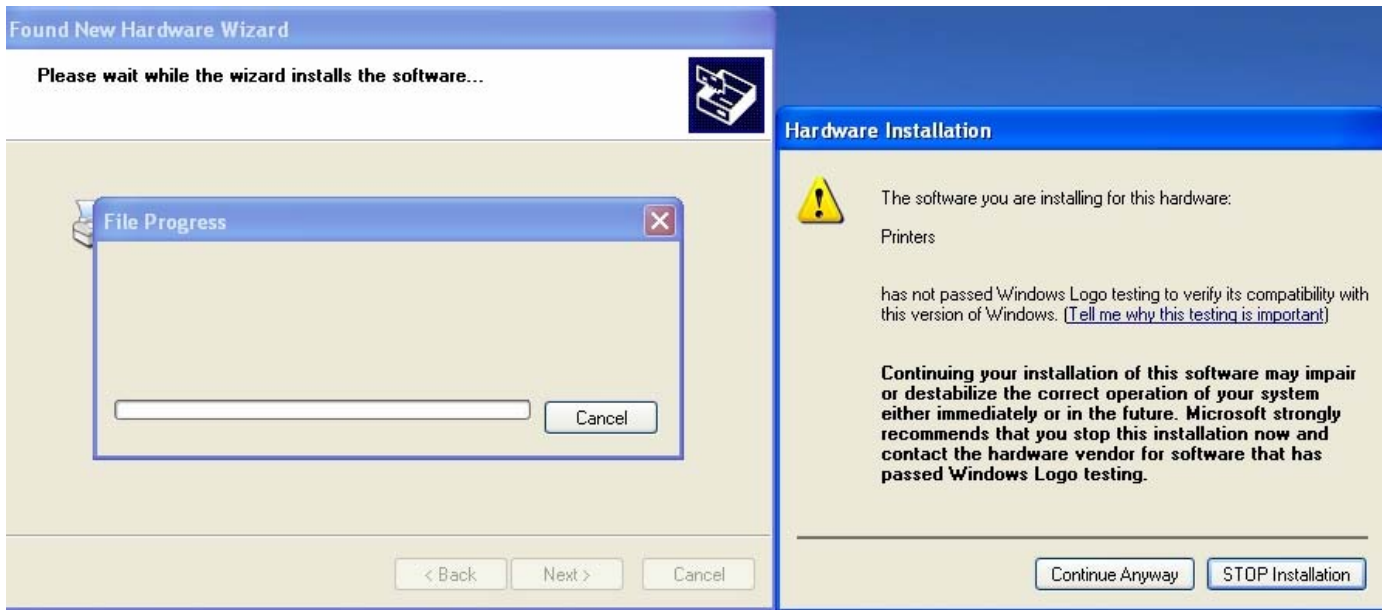
Click on "Next"



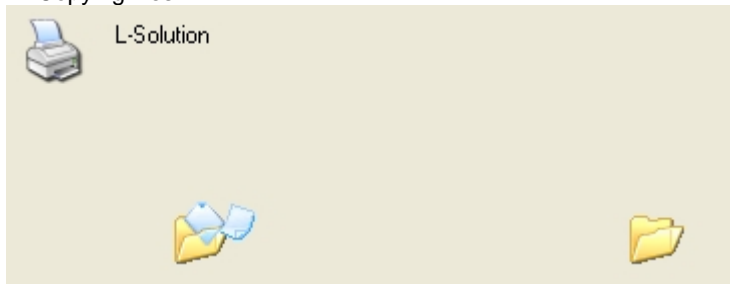
Select « install the software automatically (Recommended) »  
Click on "Next"

A message notified that driver is not windows certified.

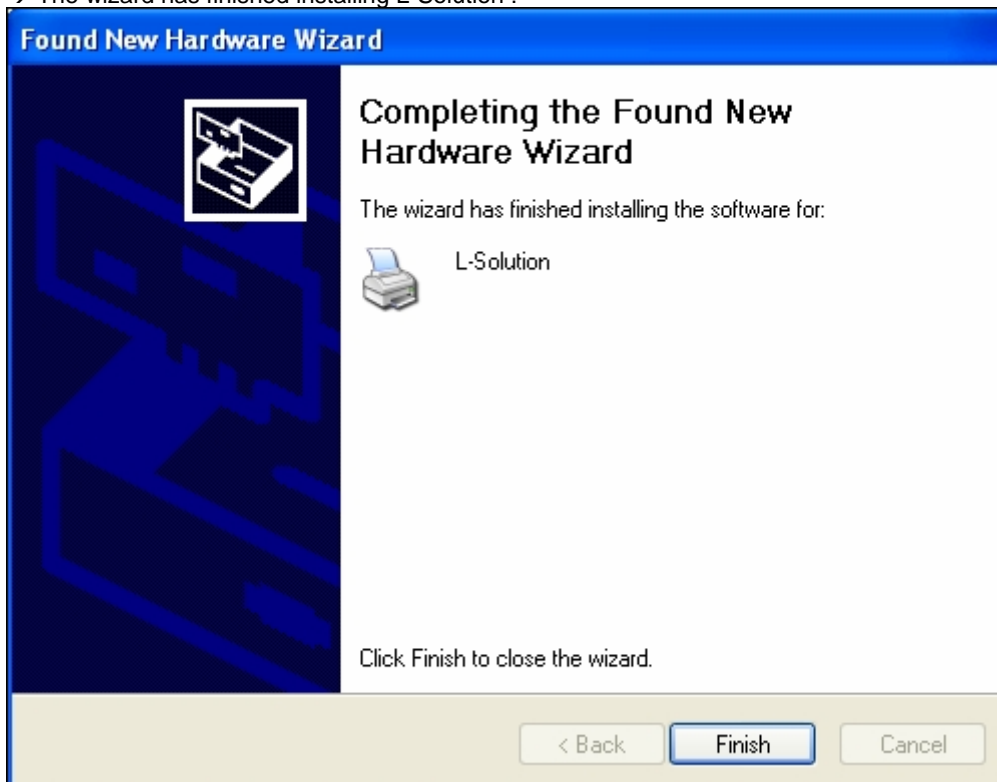




Click on « Continue Anyway »  
→ Copying files :

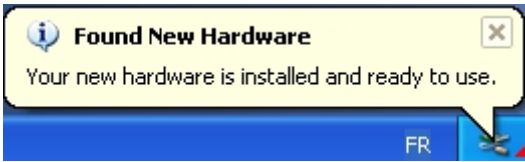


→ The wizard has finished installing L-Solution :

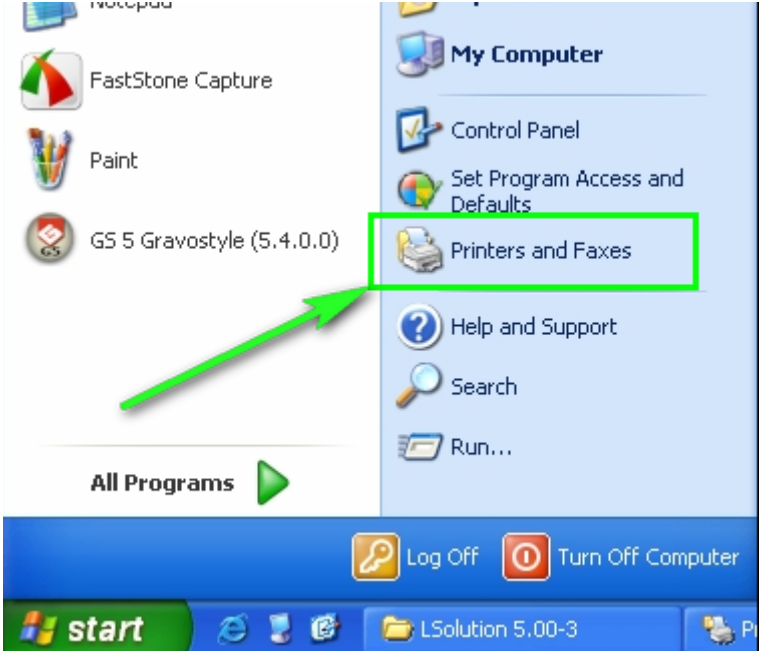


Click on « Finish »

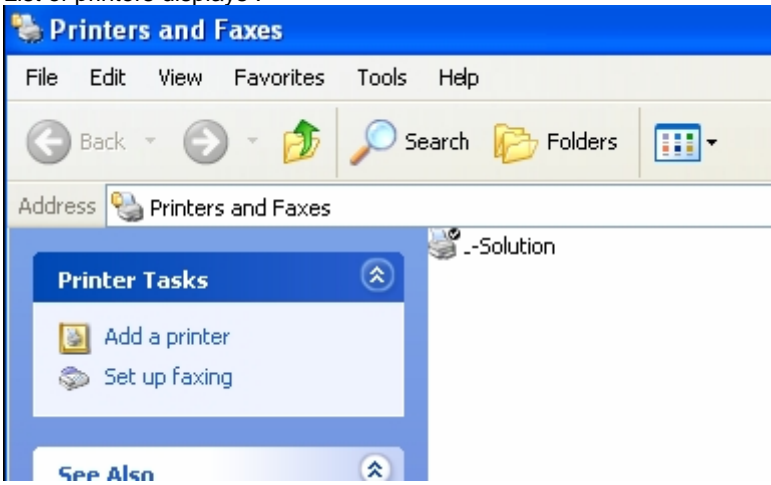
→ a message notified « Your new hardware is installed and ready to use » :



Click on « Printers and Faxes » in « Start » menu (or in Control panel)



List of printers displays :



Give this printer the name of your laser machine :



**Install an additional engraving laser machine on USB port :**

Case n°1 : **the laser machine is different from machines already installed and firmware of the machine is « plug & Play »**  
UC\_K2000 card : Plug & Play : at least number **2.61**

Switch on the machine :

→ a tooltip displays « Found New Hardware » :



Found New Hardware Wizard is automatically launched :  
Select "No, not this time"

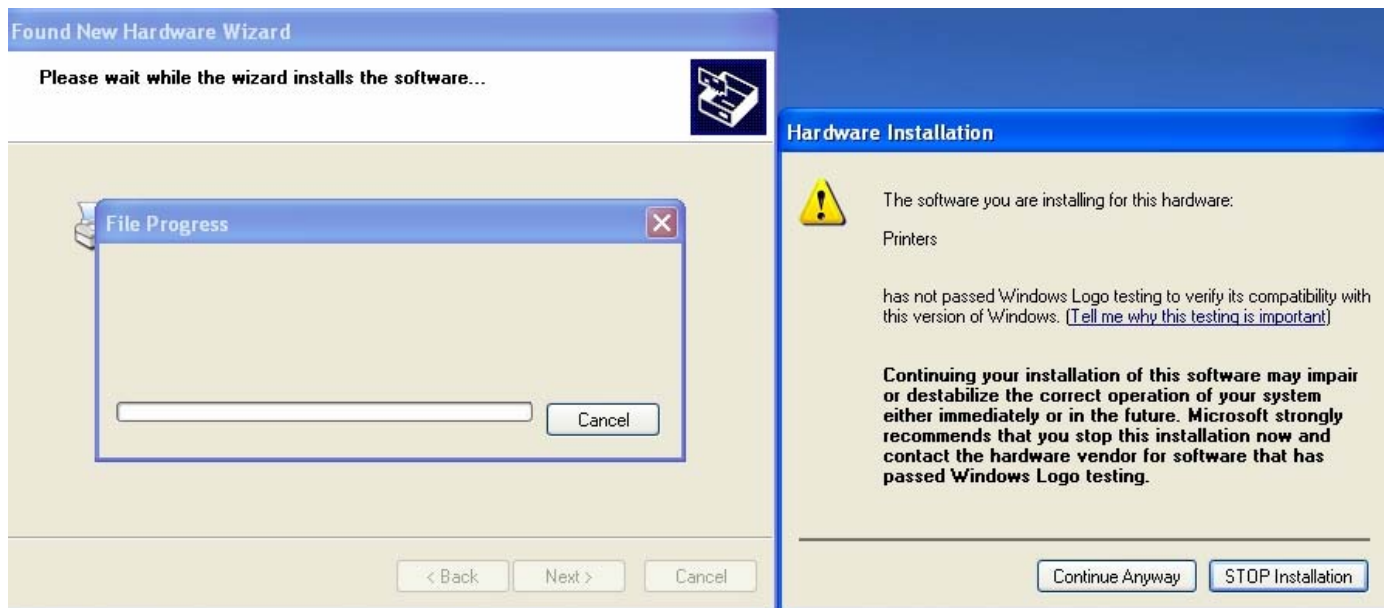


Click on "Next"

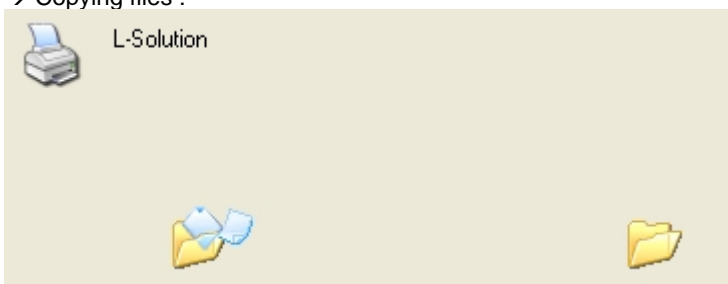


Select « install the software automatically (Recommended) »  
Click on “Next”

A message notified that driver is not windows certified.



Click on « Continue Anyway »  
→ Copying files :

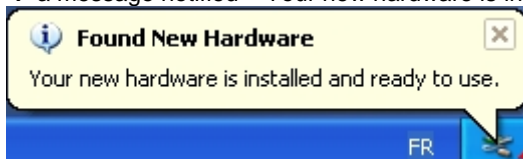


→ The wizard has finished installing L-Solution :

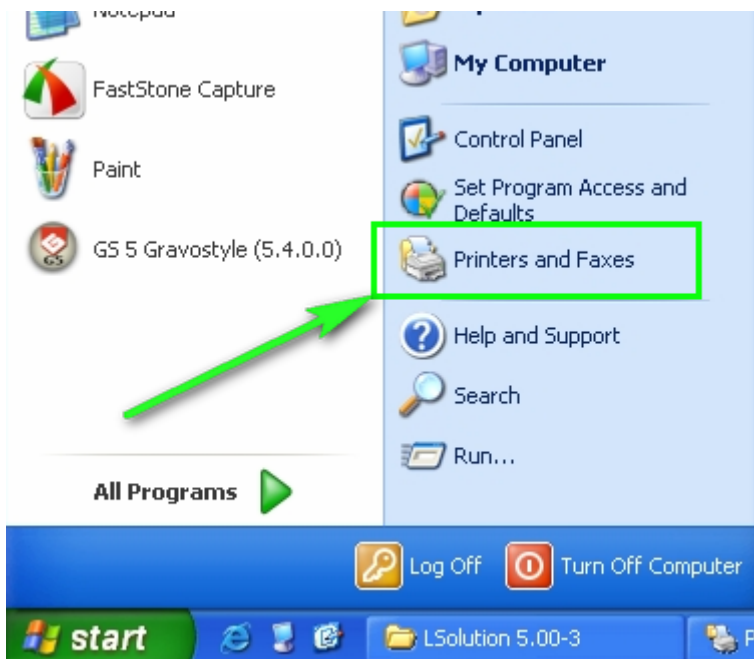


Click on « Finish »

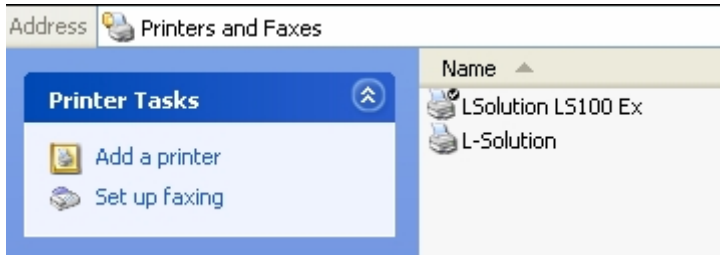
→ a message notified « Your new hardware is installed and ready to use » :



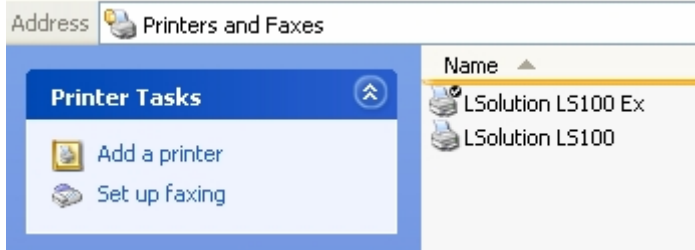
Click on « Printers and Faxes » in « Start » menu (or in Control panel)



List of printers displays :



Give this printer the name of your laser machine :

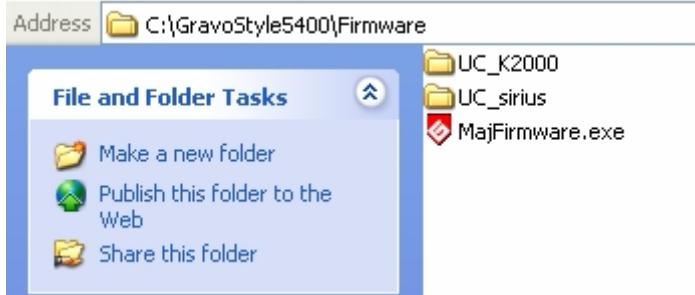


Case n°2 : **the engraving laser machine is different from machines already installed and firmware of the machine is not « plug & Play »**

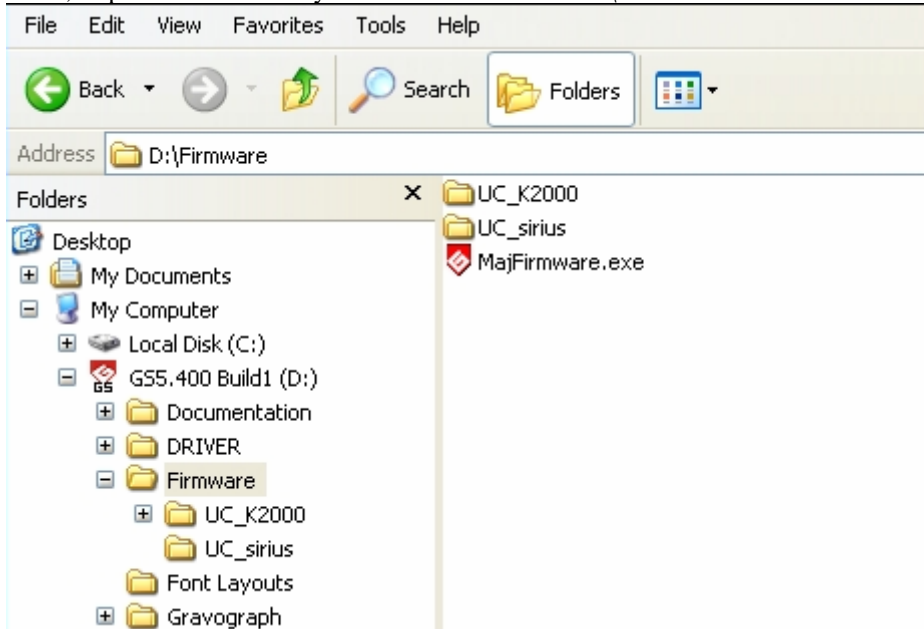
(For information, if nothing happens when we power up the engraving machine, then the version of the firmware is not “plug & play”, so, it is necessary to update the firmware with a “Plug & Play” firmware.

Open the folder with MajFirmware tool :

- If GravoStyle5 Version 4 is already installed, open C:\Gravostyle5400\Firmware\ folder

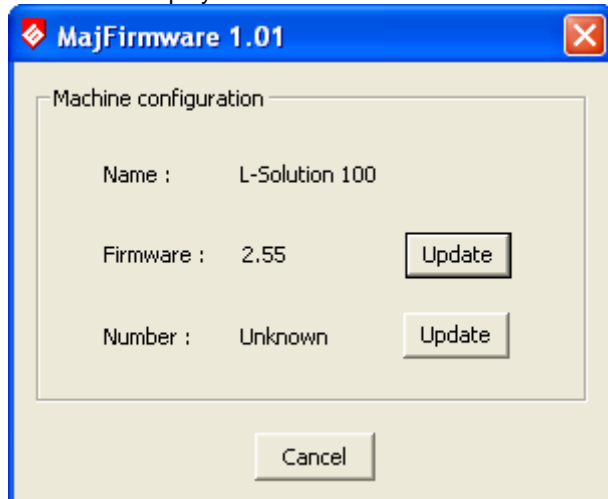


- If not, Explore the « Gravostyle5 Version 4 » DVD : D:\Firmware folder



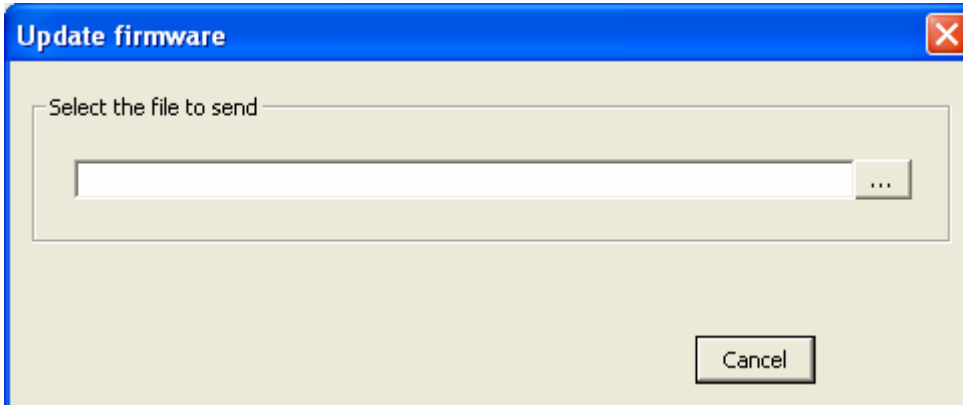
Double-click on MajFirmware.exe :


Wait for the display of the name of the machine and the version of the firmware :

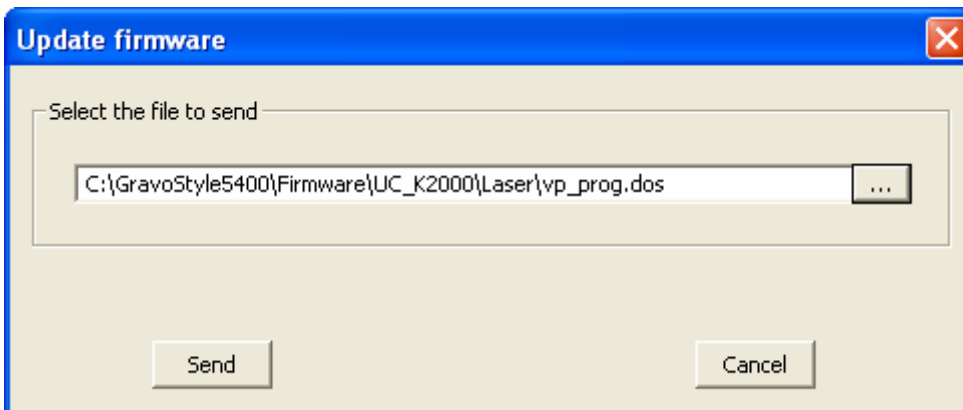


Number = « Unknown » is displayed if the firmware is not Plug & play.

Click on « Update » in front of Firmware :

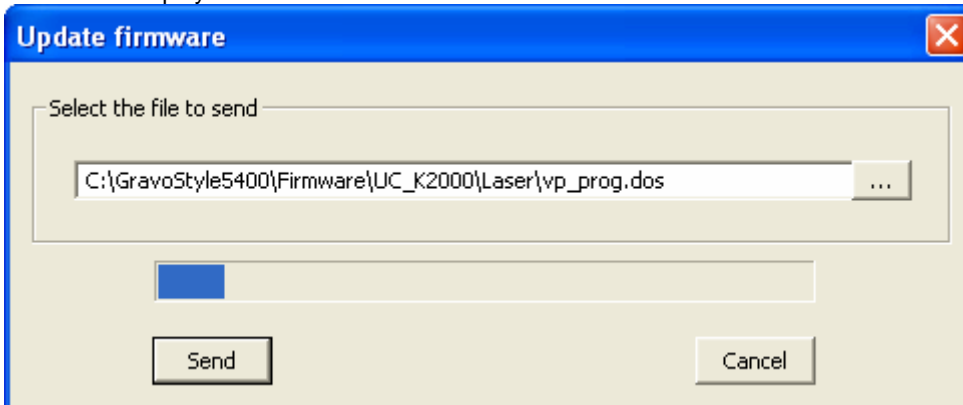


Click on the button  and select a « plug & play » firmware (vp\_prog.dos) in UC\_K2000 folder.  
UC\_K2000 card : Plug & Play : at least number **2.61**



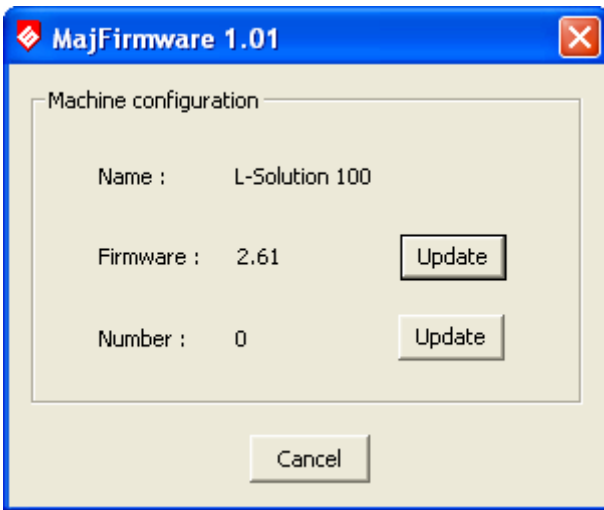
Click on Send :

A scroll bar displays :



At the end, version of firmware is displayed (2.61 in this example) :





Number = « 0 » → Firmware is « plug & play »  
Click on « Cancel » to close MajFirmware tool.

→ Follow the steps of case number 1

**Case n°3 : the engraving machine is the same one that a machine already installed**

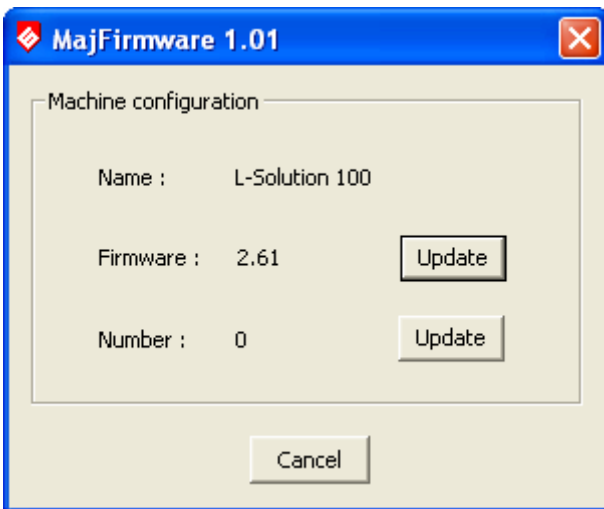
(If firmware of the machine is not “Plug & play”, follow steps of case n°2

Open the folder with MajFirmware tool :

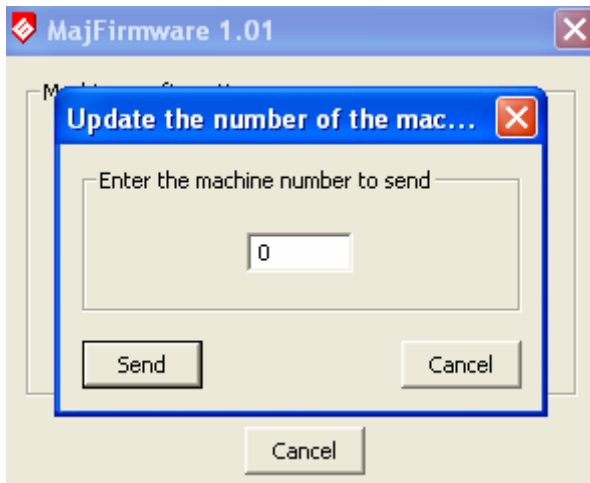
- If GravoStyle5 Version 4 is already installed, open C:\Gravostyle5400\Firmware\ folder
- If not, Explore the « Gravostyle5 Version 4 » DVD : D:\Firmware folder

Double-click on MajFirmware.exe :

Wait for the display of the name of the machine and the version of the firmware :

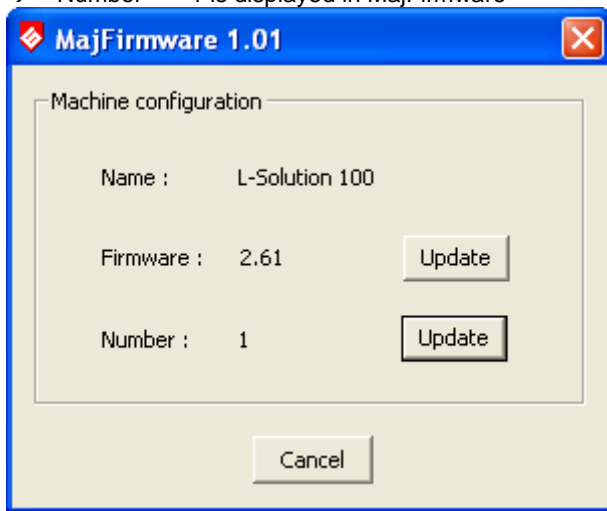


2 identical machines must be differentiated with « Number » parameter  
Click on “Update” button in front of « Number »



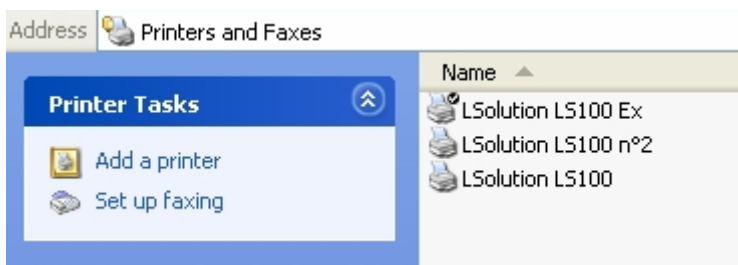
Enter a number different from the machines already installed.  
 By default, the machine has number 0, So at the installation of a second machine, enter number 1, then number 2...

Click on « Send » :  
 → machine bips  
 → « Number » = 1 is displayed in MajFirmware



Click on « Cancel » to close MajFirmware tool.  
 Power off the engraving machine, then power up again.

→ Follow the steps of case number 1  
 Ensure to differentiate the name of printer of the 2 identical machines (M40 and M40 n°2 for example)



**Install a laser machine on an other port : LPT (parallel)**

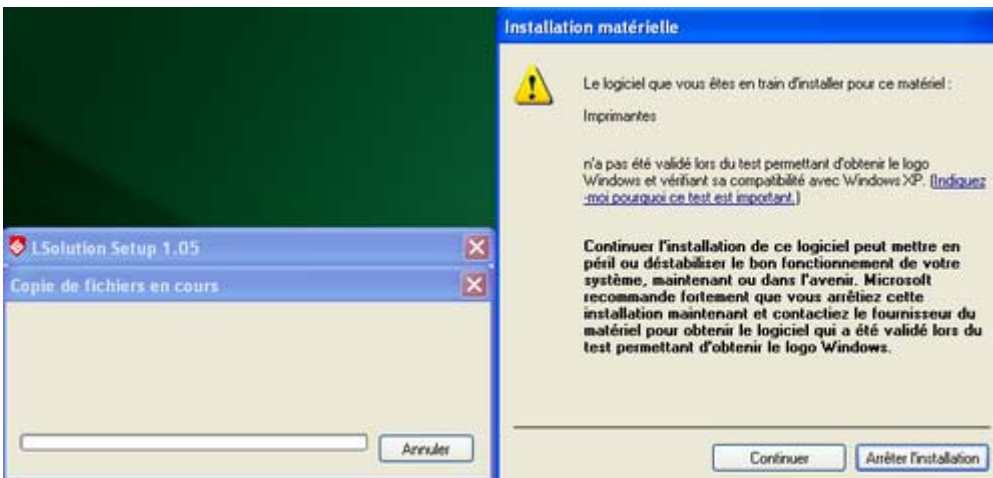
Select « Other »



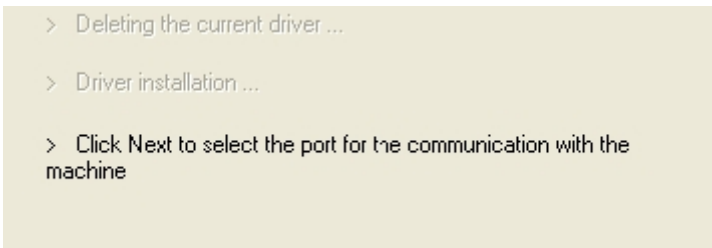
Click on « Next »

If LSolution drivers were installed, then they were deleted:

A message notified that driver is not windows certified.

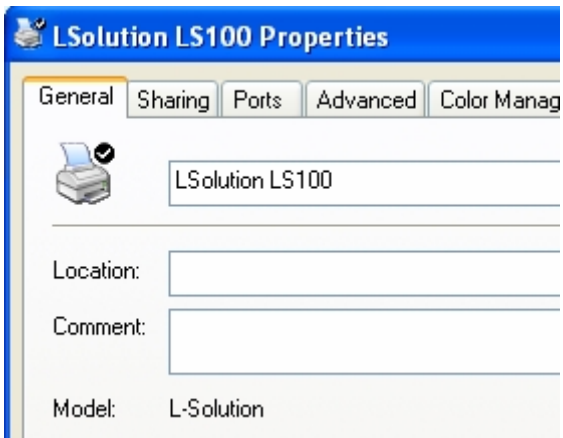


Click on « Continue Anyway »

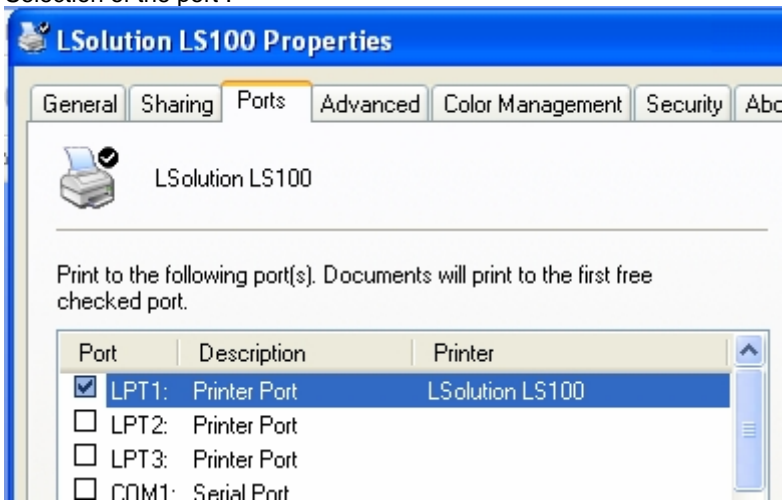


Follow the step of the installation :

Give this printer the name of the engraving machine :



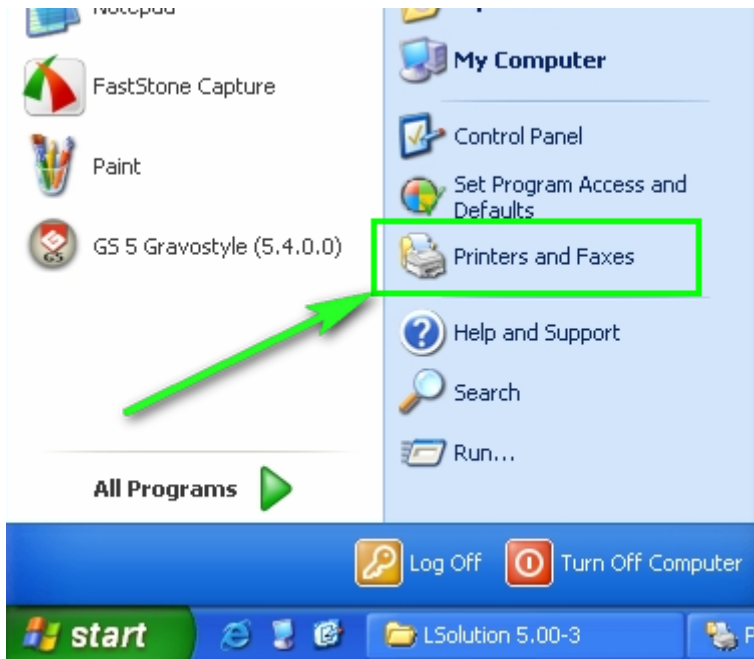
Selection of the port :



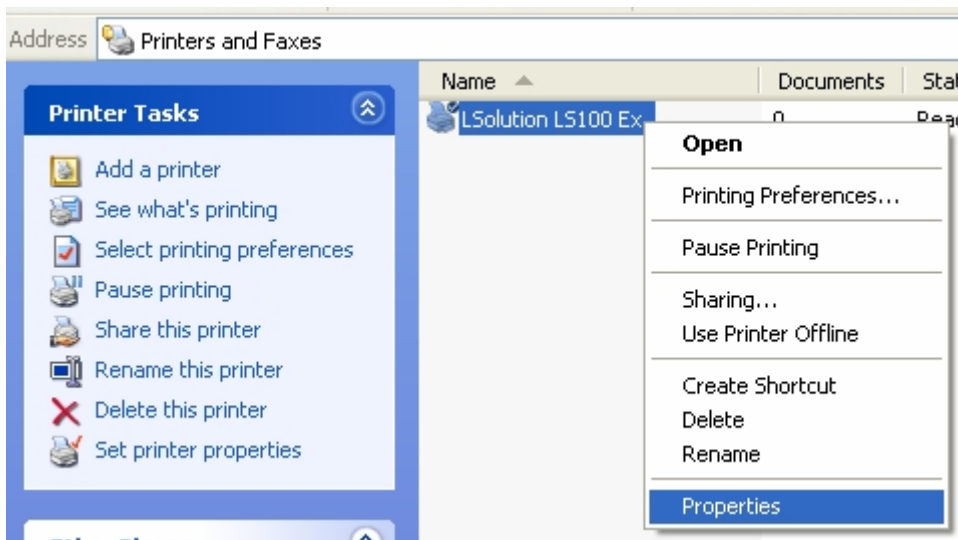
## Drive a bidirectional laser machine with GravoStyle 5 (LS100 / LS100 Ex)

It is necessary to install GT Smartstream driver for the communication between the laser machine and the PC

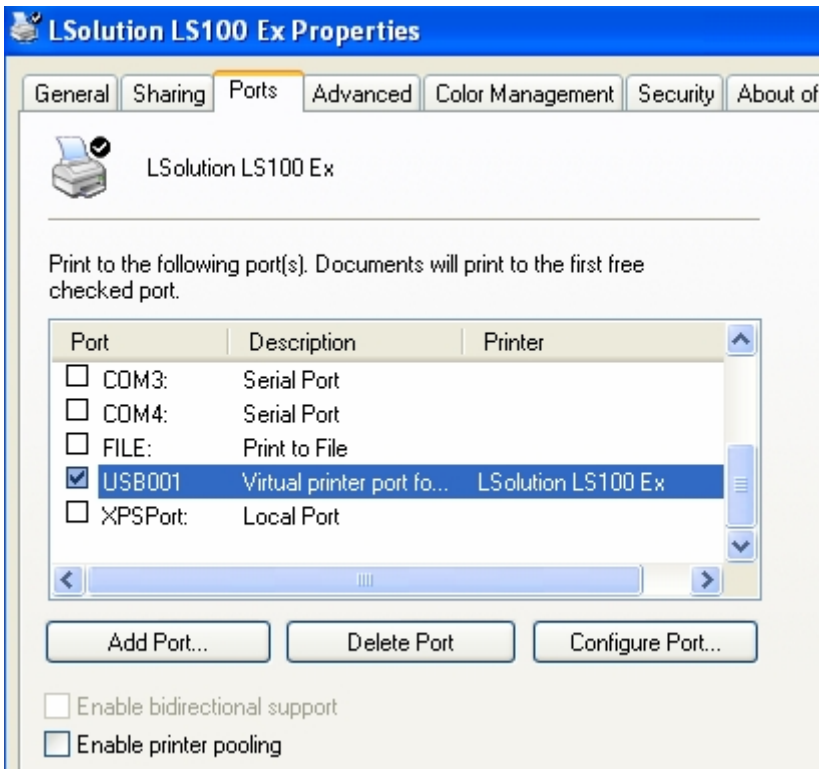
Click on « Printers and Faxes » in « Start » menu (or in Control panel)



Right click on Lsolution printer : Properties :

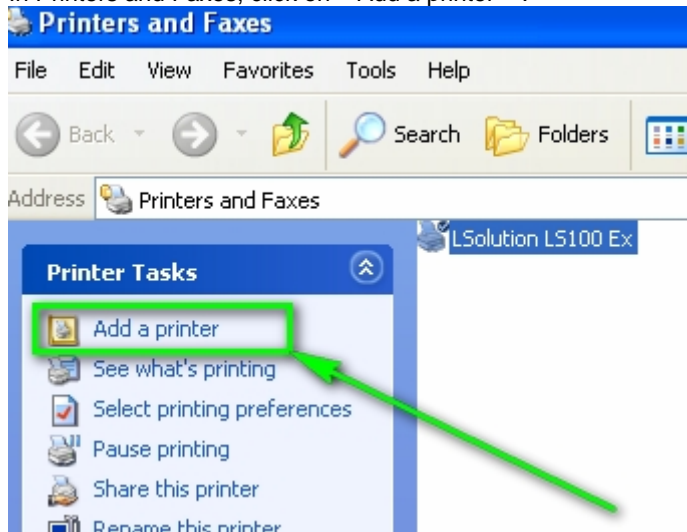


Remember the number of the USB port (USB001 in this example) :



Click on « Cancel » to close the properties of LSolution

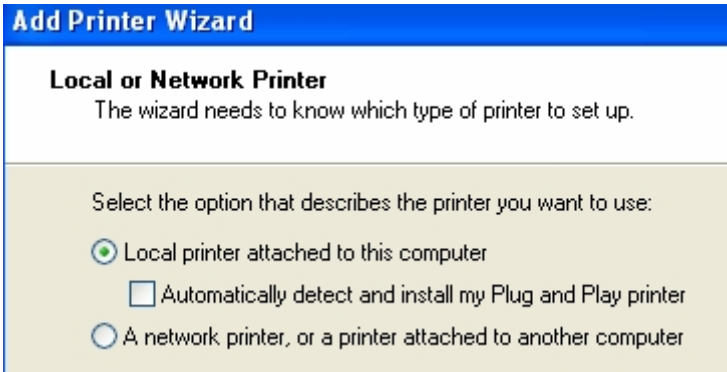
In Printers and Faxes, click on « Add a printer » :



Add Printer Wizard is lunched :

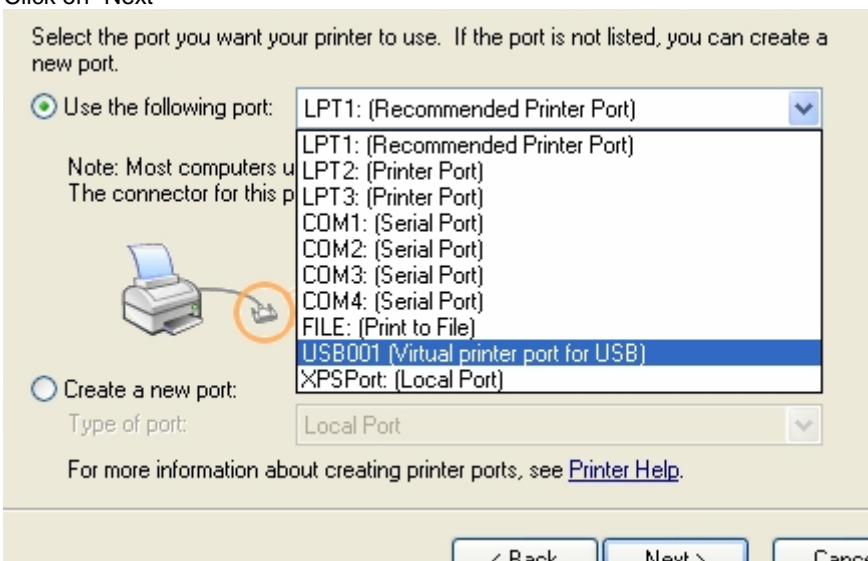


Click on "Next" :



Select « Local printer attached to this computer

Click on "Next"



Select the number of the USB port

Click on "Next"

### Install Printer Software

The manufacturer and model determine which printer software to use.



Select the manufacturer and model of your printer. If your printer came with an installation disk, click Have Disk. If your printer is not listed, consult your printer documentation for compatible printer software.

Manufacturer: Agfa  
Printers: AGFA-AccuSet v52.3, AGFA-AccuSetSF v52.3, AGFA-AccuSet 800, AGFA-AccuSet 800SF v52.3

This driver is digitally signed. [Tell me why driver signing is important](#)

Buttons: Windows Update, Have Disk... (highlighted with a green arrow), < Back, Next >, Cancel

Select « have Disk... »

**Install From Disk**

Insert the manufacturer's installation disk, and then make sure that the correct drive is selected below.

Copy manufacturer's files from: A:\

Buttons: OK, Cancel, Browse...

Click on « Browse »

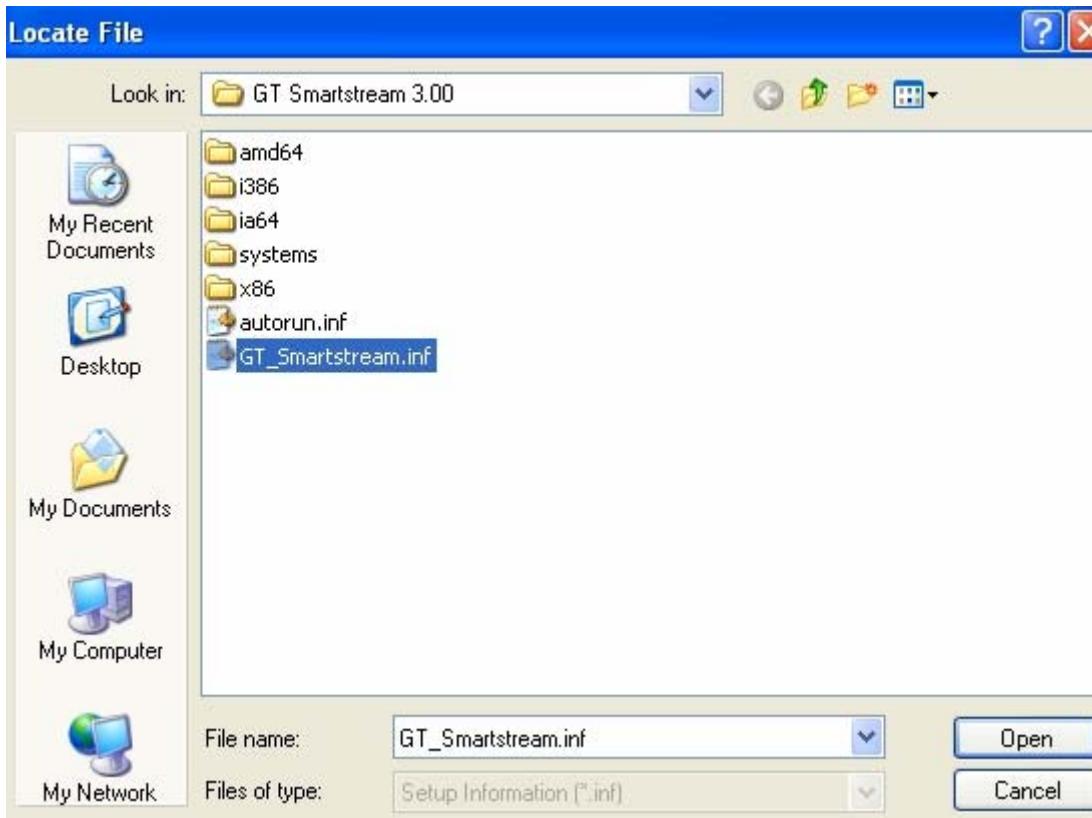
**Locate File**

Look in: GT Smartstream 3.00

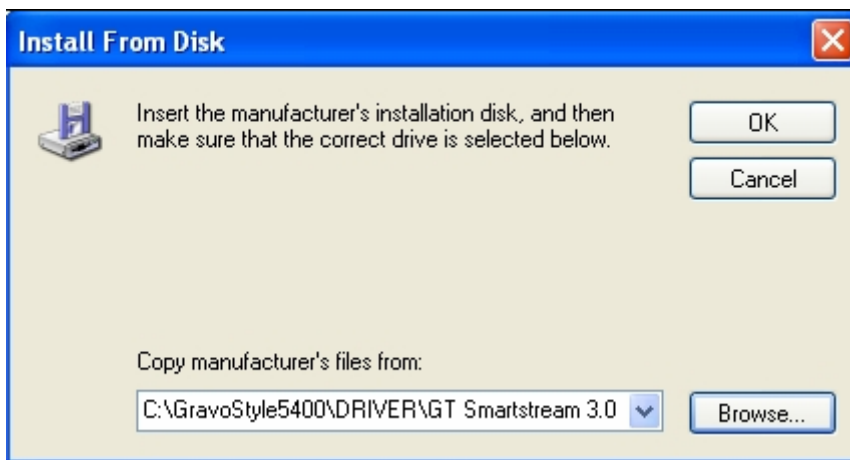
- My Recent Documents
- Desktop
- My Documents
- My Computer
  - Local Disk (C:)
    - GravoStyle5400
      - DRIVER
        - GT Smartstream 3.00
  - DVD-RW Drive (D:)
  - Removable Disk (E:)
  - Removable Disk (F:)
  - Removable Disk (G:)

Locate file in : C:\GravoStyle5400\DRIVER\GT Smartstream 3.00 folder





Select GT\_Smartstream.inf  
Click on "Open"



Click on « OK »



Click on « Next »

Type a name for this printer. Because some programs do not support printer a name combinations of more than 31 characters, it is best to keep the name as possible.

Printer name:

GTS LS100 Ex

Give this printer the name of the laser machine (with GTS for GT Smartstream for example in order to make the difference with Lsolution driver)

Printer by default : select no.....

Do not share this printer

Share name:

Do you want to print a test page?

Yes

No

### Add Printer Wizard



## Completing the Add Printer Wizard

You have successfully completed the Add Printer Wizard.  
You specified the following printer settings:

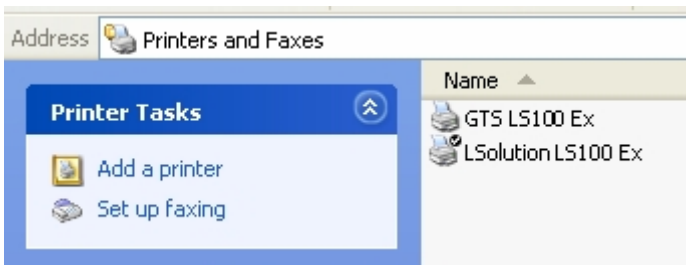
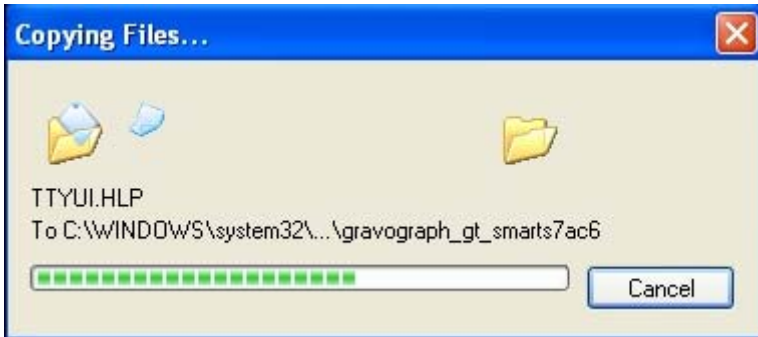
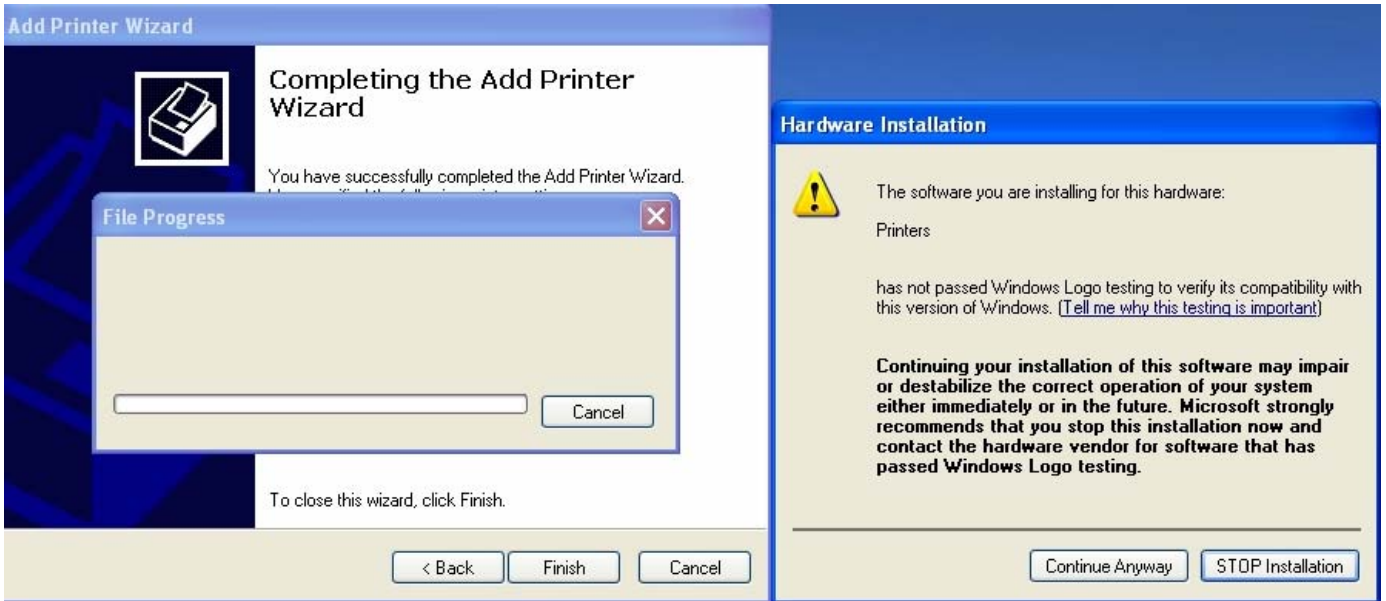
Name: GTS LS100 Ex  
Share name: <Not Shared>  
Port: USB001  
Model: GT Smartstream  
Default: Yes  
Test page: No

To close this wizard, click Finish.

< Back

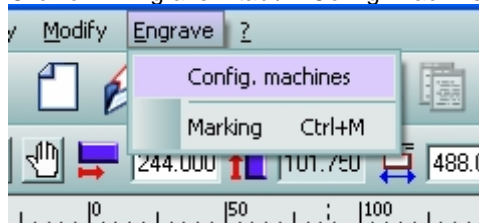
Finish

Cancel

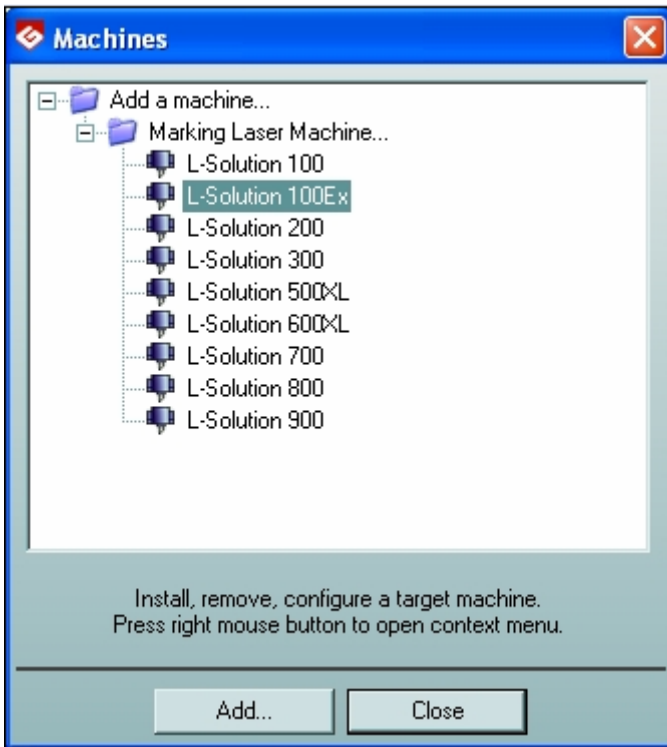


**In GravoStyle5 :**

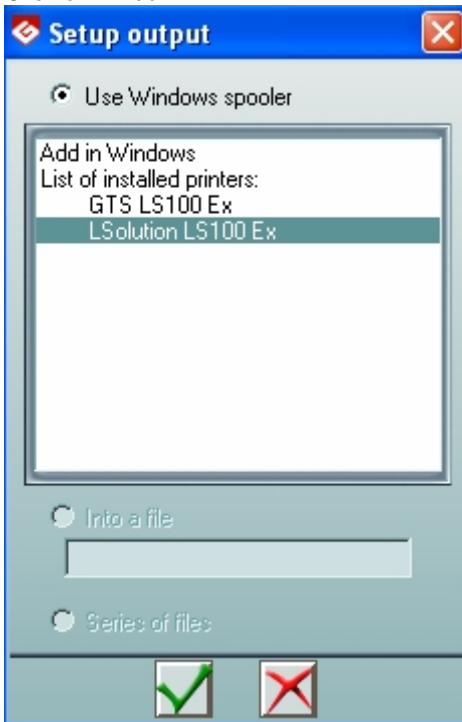
Start GravoStyle5 Version 4  
 Click on « Engrave » tab / « Config. Machines »



Select your engraving machine



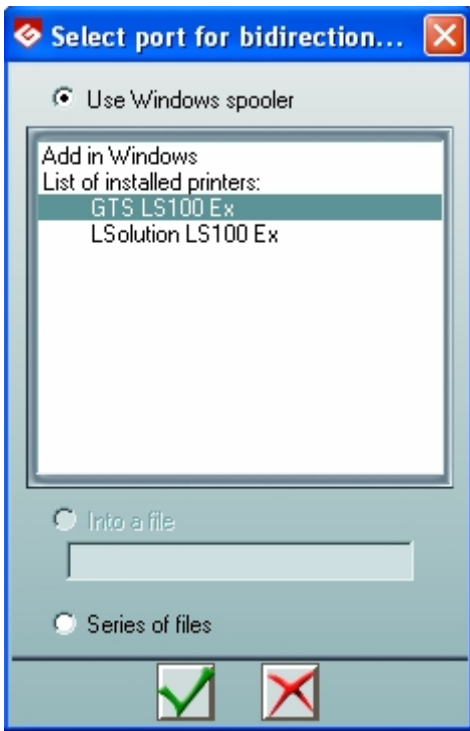
Click on « Add »



Select Lsolution printer with the name of your engraving machine  
Click on « valid » button



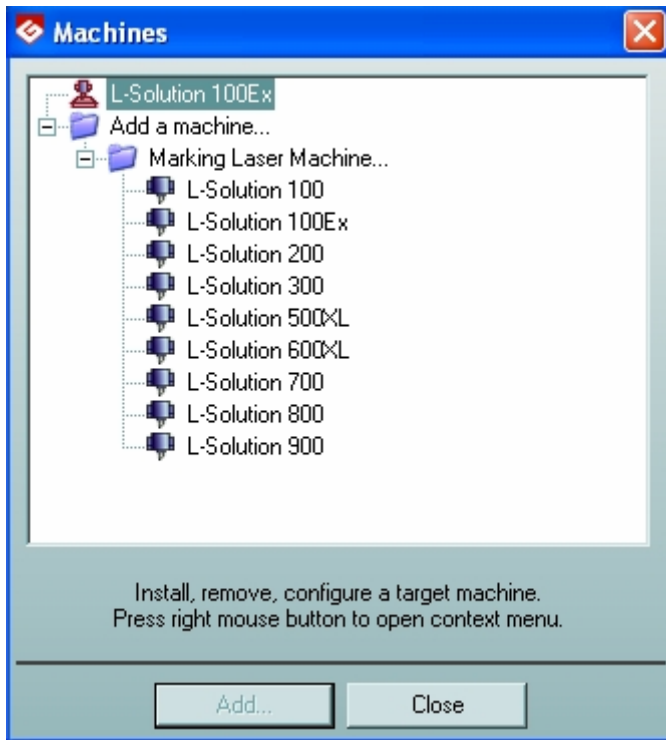
Select the USB card  
Click on "Valid"



Select GT Smartstream printer with the name of your engraving machine  
Click on « valid » button

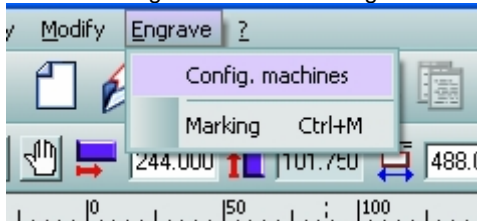


Click on « OK »

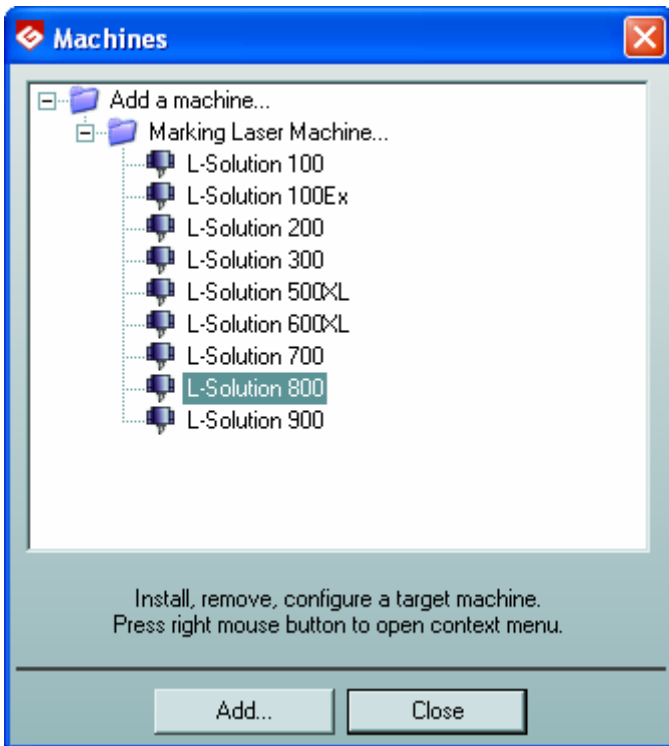


## **Drive a no-bidirectional laser machine with GravoStyle 5 (LS800 / LS900)**

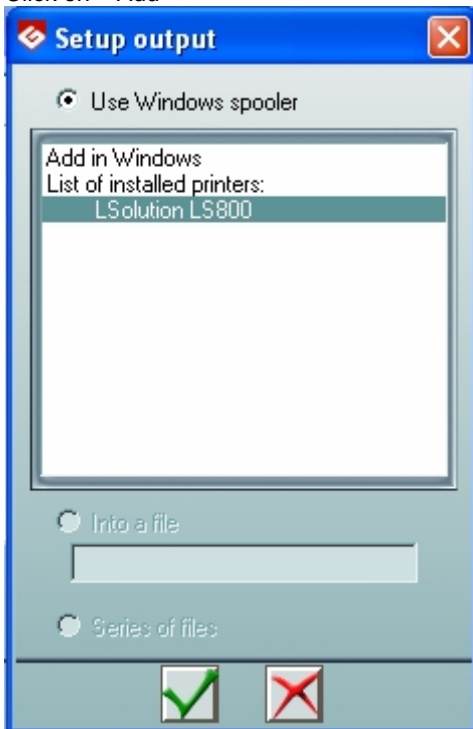
Start GravoStyle5 Version 4  
Click on « Engrave » tab / « Config. Machines »



Select your engraving machine



Click on « Add »



Select Lsolution printer with the name of your engraving machine  
Click on "Valid"



Select the card  
Click on "Valid"



## **Drive a laser machine with your usual graphical editor (Corel Draw, Autocad, Adobe Illustrator...)**

Set up Gravograph L-Solution driver.

**To set up driver use L-Solution CD delivered with your machine.**

Set the softlink between PC and engraving machine.

Open a new document in your **usual graphical editor (Corel Draw™, AutoCad™, Adobe Illustrator™, etc.)**.

Set objects to engrave (text, vectorial logos, bitmap images).

Set each object properties (contour thickness, surface, color).

**Enable Print command.**

In Printer Selection, **click the printer named exactly like your engraving laser machine**

OK Click.

**Configure laser engraving using L-Solution dialog box commands** (more information in Gravograph manual delivered with laser machine).



## Frequently Asked Questions :

### What is a bidirectional laser machine ?

Without modification of the postpros in Gravostyle 5 Version 4 Build 2 : it is the LS100 and LS100 Ex machines  
These machines have a CPU USB (UC\_K2000) and allow a bidirectional communication between PC and laser machine.  
The other laser machines don't have systematically a CPU USB, that is why the bidirectionality in the postpro is not activated by default. The postpros with the bidirectionality for LS800 and LS900 (if CPU USB) are available in  
C:\GravoStyle5400\PostPro\Bidirectional LS800 LS900 postpro. So copy and paste it in the postpro folder and then install the laser machine in GS5

### How to know if the firmware of the machine is "Plug & Play"?

Plug a single machine onto an USB port of your PC  
Power up it

→ if nothing happens on the PC, then the version of the firmware is not "Plug & Play"

If the firmware is "Plug & Play", Found New Hardware wizard is launched and these kind of tooltips display if Gravograph drivers has already installed :

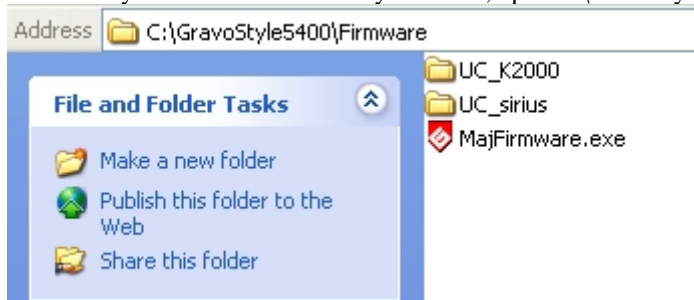


To know if the firmware is "Plug & Play", check the number of the version of the firmware : look at below :

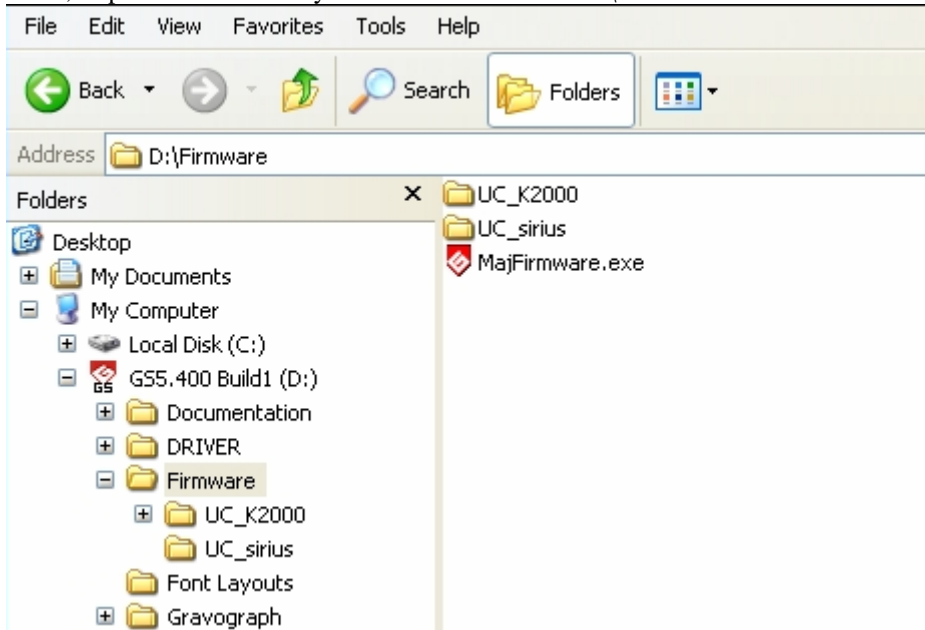
### How to know the name of the machine and the version of the firmware ?

Open the folder with MajFirmware tool :

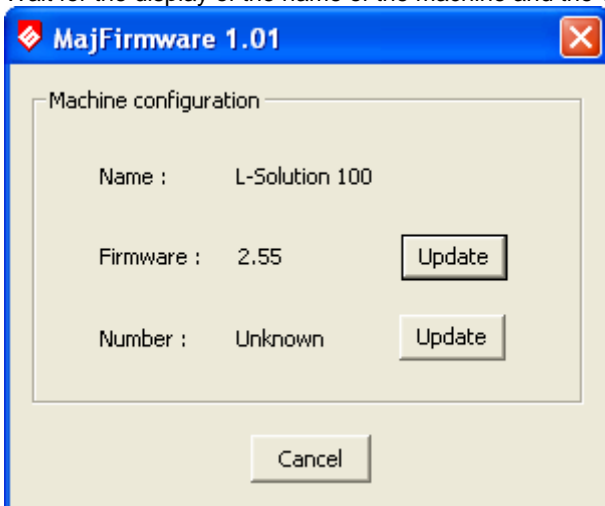
- If GravoStyle5 Version 4 is already installed, open C:\Gravostyle5400\Firmware\ folder



- If not, Explore the « Gravostyle5 Version 4 » DVD : D:\Firmware folder



Double-click on MajFirmware.exe :  
 Wait for the display of the name of the machine and the version of the firmware :



Number = « Unknown » is displayed if the firmware is not Plug & play.

Sirius card : Plug & Play : at least number **1.37**  
 Mono board M-series  
 USB card for M20 / M40



UC K2000 card : Plug & Play : at least number **2.61**  
 CPU USB for IS – LS machines  
 USB card for IS machine and laser machine



**Is there an order to install several machines plugged on the same PC ?**

Only rotary machines : NO  
 Only laser machine : NO

Rotary and laser machines : YES : it is necessary to begin with Rotary machine :

Explanations :

When a bidirectional laser machine is installed with Gravostyle5, a GT Smartstream driver is installed with Lsolution driver. The setup.exe of GT Smartstream deletes every GT Smartstream drivers already installed. So le driver for the laser machine would be deleted...

**Which driver to use with a machine ?**

By default :

With GravoStyle5 V4 :

M20, M20 IQ, M20 Jewel, M20 Jewel 2, M20 Jewel IQ, M20 XL, M20 XL IQ, M40 IQ, M40 USB, M40 Volume IQ, M40G IQ, M40G USB, IS400 IQ, IS400 PNS, IS400 Volume IQ, IS400 Volume PNS,	GTSmartstream
IS200, IS200 IQ, IS400, IS400 Volume, IS700, IS6000, IS6000 IQ, IS6000 XP, IS 7000, IS 7000 IQ, IS7000 XP, IS 8000, IS 8000 IQ, IS8000 XP	Generic Text Only
L100, LS100 Ex	LSolution + GTSmartstream
LS800, LS900	LSolution

Particular cases :

- For the machine without red led (point & shoot functions), Generic Text only driver is used except if a modification is done in the postpro in order to use the spindle for point & shoot function (instead of the led) : in these specific cases, GT Smartstream driver must be used

- For the LS800 and LS900 with USB Card (UC\_K2000), 2 specific postpros can be used in order to activate the "Point & Shoot" functions. So, GT Smartstream must be used, too.