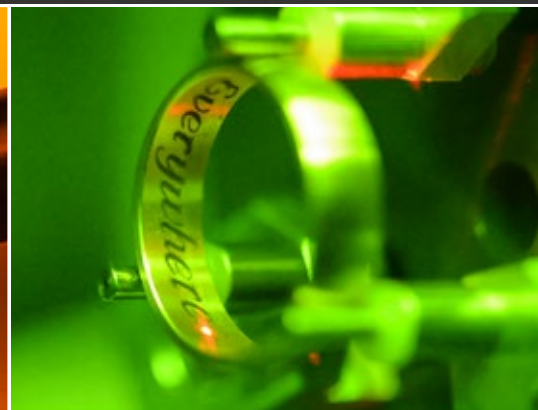


## LASER ENGRAVING SOLUTION



welase™

EVERYONE - EVERYWHERE - EVERYTHING

# WeLase™

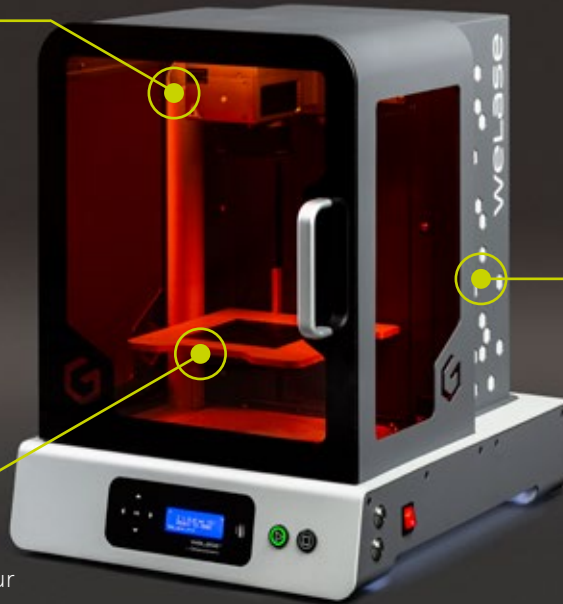
## LASER ENGRAVING STATION - ALL IN ONE

### EVERYONE

- Ready to use machine :  
Unpack and engrave
- Preview before the engraving starts
- Manual or programmable height adjustment

### EVERYTHING

- Engrave all types of materials with our 4 technologies (Green, Fibre, Hybrid, CO2)
- Texts, logos, drawings, photos, vector files
- Precise positioning without clamping for all types of objets



### EVERYWHERE

- Sleek and elegant design
- Compact - Adapts to shops and workshops
- Maximum security - Class 1

## CREATE A CUSTOMER EXPERIENCE IN YOUR STORES



Permanent engraving in seconds to create a unique object



An eye-catching design with three transparent windows as well as internal and external lighting.



A touchscreen tablet\* with wifi capabilities to interact with your sales audience: Engage the customer!



Live view camera feature live projection of the engraving \*

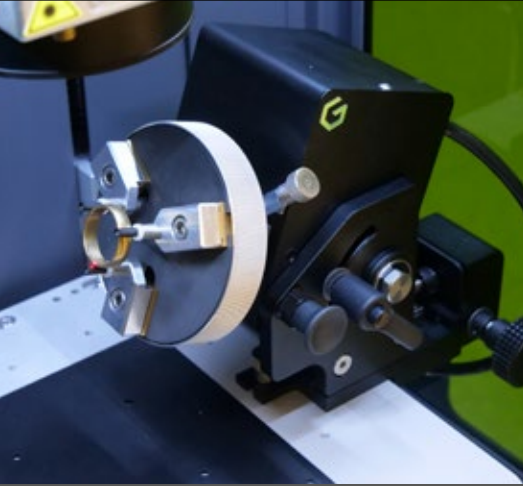


Gravograph supports you in the integration of the WeLase into your environment

Gravotech has been creating specific engraving solutions for more than 80 years: our creations are references. Our brand manufactures machines, software, consumables and services, our 360° offer supports you in all your marking needs. We are present in more than 100 countries, from independent craftsmen to international luxury brands.

Discover WeLase™, the simplest and most versatile laser engraving solution!

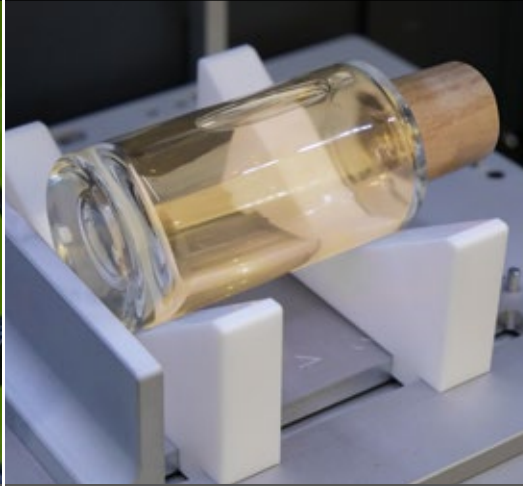
### PACK JEWEL \*



- + Interior and exterior engraving of rings and bracelets
- + Precise positioning of jewelry
- + Contrasted result or deep engraving

\* Options available

### PACK EASY FIX \*



- + Precise and fixed repeatable positioning
- + Versatile: from a pen to a bottle with the same clamp
- + Secure your object easily with a magnet system

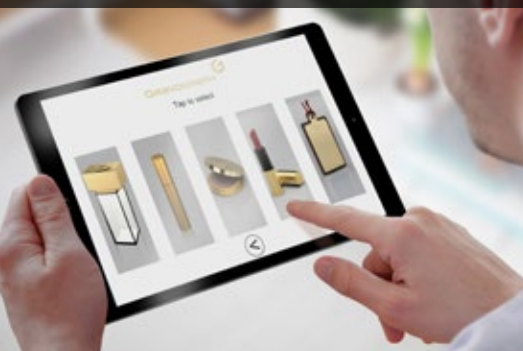
### PACK SAFE AIR \*



- + Exhaust the fumes and particles to keep the machine clean and accurate
- + Filters fumes and odors: Protect your employees
- + Integrates easily with the WeLase

## SOFTWARE all levels

### NOVICE



#### abc catalog

- Object catalogue
- Automated settings and engraving positioning
- No training required

### BEGINNER



#### abc

- Intuitive software
- Free composition
- Engraving parameter library

### EXPERT

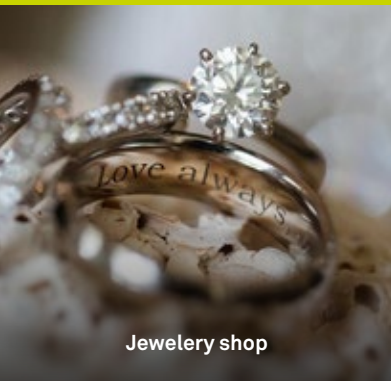


#### GRAVOSTYLE™

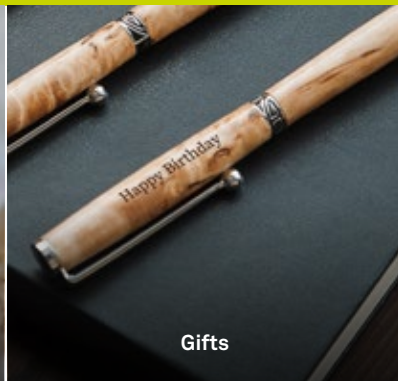
- Make full use of the WeLase's capabilities
- Imports of drawings, logo retouching
- Advanced engravings: photos, bas-relief, specific tool path

A SOLUTION TAILORED TO EACH USER PROFILE

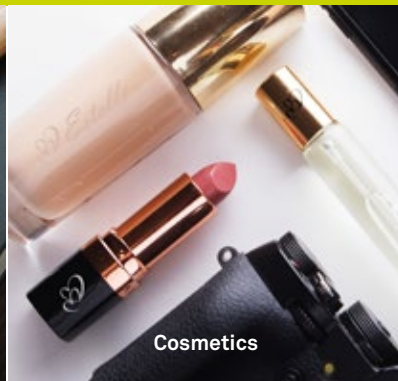
# APPLICATIONS



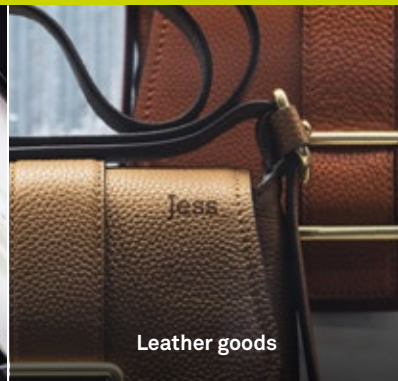
Jewelry shop



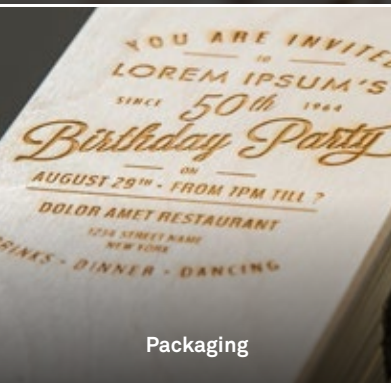
Gifts



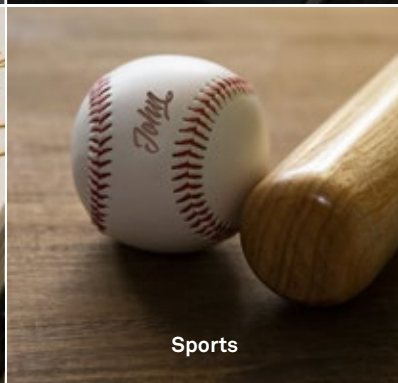
Cosmetics



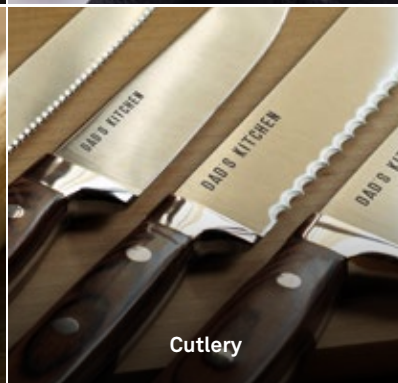
Leather goods



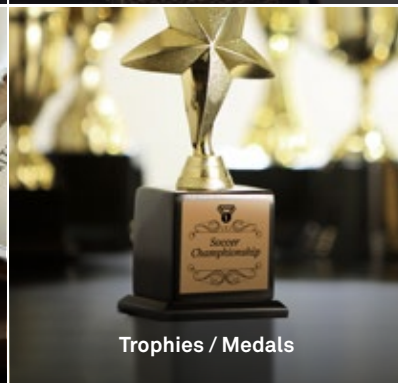
Packaging



Sports



Cutlery



Trophies / Medals

# TECHNICAL SPECIFICATIONS

## welase™

Technology	Green	Fibre	Hybrid	CO2
				
Materials	The most accurate on all materials	The most powerful on metals	The best compromise on metals and plastics	The most accessible for organic, transparent and painted materials.
Max height of the object (in)		13 x 8 x 4		13 x 8 x 7
Engraving area (in)			4.3 x 4.3	
Dimensions L x l x h (in)			17.7 x 22 x 24	
Weight (lbs)	86	93	93	82

JOIN US



GRAVOTECH

